



## In line pressure compensated single-acting flow control valves

### FT 270/5

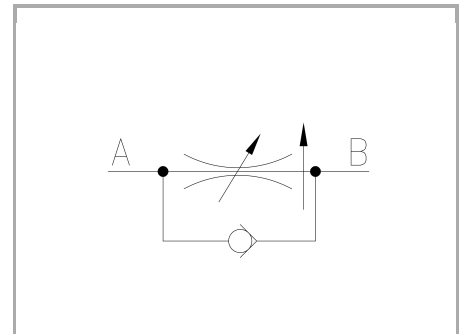
Compensated single-acting flow control valves available from 1/4" to 1" BSPP size, max. working pressure 250 Bar, adjustable oil flow rate from 2 to 140 Lt./min. (depending on the size) - Precision in compensation +/- 5% max

**Single-acting control**

**Pressure compensated In line or panel mounting**

**Carbon steel**

**Connections: F - F Female - Female**



## Technical information

### Technical description

The pressure compensated valves FT 270/5 are essentially composed of an adjustable orifice and of a pressure compensator. The check valves, realized through a shutter, reduce the number of the components in movement. Inside the base there are wide cross-sections which significantly reduce the pressure drop. The accuracy of the machining of the internal components ensures a very low hysteresis and a remarkable precision in compensation that on this series is around  $\pm 4\%$  of the flow rate. The accurate checks carried out on the products ensure a proper functioning of the valves also in heavy working conditions and an excellent lasting reliability.

### Materials

|   |   |
|---|---|
| CORPO BASE / BASE BODY                      | Acciaio/Steel 11 S Mn Pb 37-UNI EN 10087                  |
| SPILLO DI REGOLAZIONE / ADJUSTING NEEDLE    | Acciaio legato/Alloy steel                                |
| CORPO CARTUCCIA / CARTRIDGE BODY            | Acciaio/Steel 39 Ni Cr Mo 3-UNI EN 10083                  |
| GUARNIZIONI / GASKETS                       | Di serie NBR - A richiesta FPM/Standard NBR-on demand FPM |
| ANELLI ANTIESTRUSIONE / ANTIEXTRUSION RINGS | PTFE  |
| MANOPOLA TIPO MA - RA / KNOB TYPE MA - RA   | Alluminio/Aluminum GD AlSi12 - UNI EN AB 46100            |
| MANOPOLA TIPO MP / KNOB TYPE MP             | ABS   |



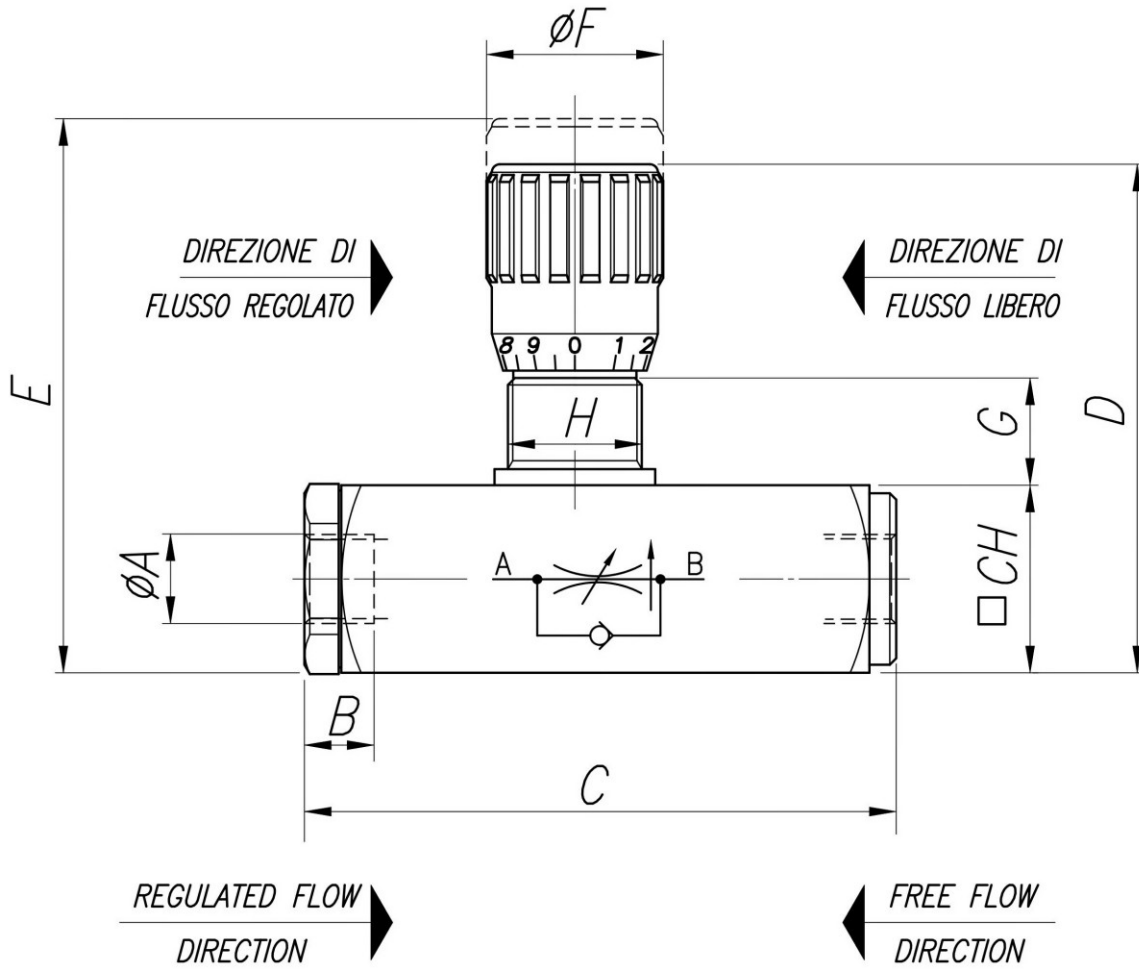
## Technical data

| TIPO / TYPE | PRESSIONE<br>ESERCIZIO BAR /<br>WORKING<br>PRESSURE BAR | MIN. ΔP DI<br>FUNZIONAMENTO<br>BAR / MIN.<br>WORKING ΔP BAR | TEMPERATURA<br>ESERCIZIO /<br>WORKING<br>TEMPERATURE | GRADO DI<br>FILTRAZIONE μm<br>/ FILTRATION<br>GRADE μm |
|-------------|---|---|--|--|
| 14          | 250   | 5   | -20°C/+70°C  | 25   |
| 38          | 250   | 7   | -20°C/+70°C  | 25   |
| 12          | 250   | 10  | -20°C/+70°C  | 25   |
| 34          | 250   | 10  | -20°C/+70°C  | 25   |
| 100         | 250   | 16  | -20°C/+70°C  | 25   |

## Dimensional tables and drawings

| TIPO / TYPE | A<br>UNI 338 | B    | C     | D    | E    |
|-------------|--------------|------|-------|------|------|
| 14          | 1/4" G       | 12,5 | 96    | 81,5 | 88,5 |
| 38          | 3/8" G       | 13   | 112,5 | 94,5 | 103  |
| 12          | 1/2" G       | 15,5 | 141,5 | 112  | 122  |
| 34          | 3/4" G       | 17   | 168   | 138  | 150  |
| 100         | 1" G         | 21   | 216   | 175  | 192  |

| TIPO / TYPE | ØF | G  | H       | CH | PESO / WEIGHT<br>KG |
|-------------|----|----|---------|----|---------------------|
| 14          | 27 | 15 | M20x1   | 30 | 0,580               |
| 38          | 33 | 17 | M25x1,5 | 35 | 0,940               |
| 12          | 38 | 18 | M30x1,5 | 45 | 1,830               |
| 34          | 47 | 24 | M40x1,5 | 55 | 3,350               |
| 100         | 58 | 32 | M50x1,5 | 70 | 7,000               |





## Flow rate curves

