

In line pressure compensated single-acting flow control valves

FT 2270/5

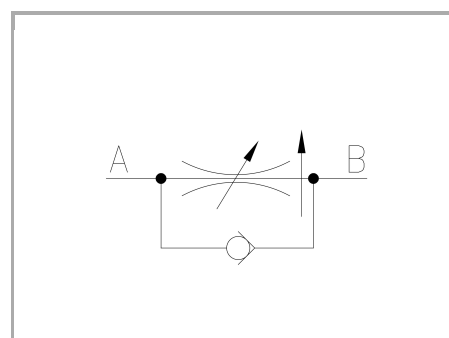
Compensated single-acting flow control valves available from 1/4" to 1" BSPP, max. working pressure 250 Bar, adjustable oil flow rate from 2 to 140 Lt./min. (depending on the size) - Precision in compensation +/- 5% max

Single-acting control

Pressure compensated In line or panel mounting

Stainless Steel AISI 316

Connections: F - F Female - Female



Technical information

Technical description

The pressure compensated valves FT 2270/5 are essentially composed of an adjustable orifice and of a pressure compensator piston. The check valves, realized through a valve poppet, reduce the number of the components in movement. Inside the base there are wide transverse sections which appreciably reduce the loss of pressure. The accuracy of internal machining ensures a very low hysteresis and a remarkable precision in compensation that, on this series, is about 4% of the flow rate. The accurate checks on all products guarantee a proper functioning of our valves also in the heavy working conditions and an excellent reliability over the years.

Materials

| | |
|--|---|
| CORPO BASE / BASE BODY | Acciaio INOX / Stainless Steel AISI 316 |
| SPILLO DI REGOLAZIONE / ADJUSTING NEEDLE | Acciaio INOX / Stainless Steel AISI 630 |
| CORPO CARTUCCIA / CARTRIDGE BODY | Acciaio/Steel 39 S Ni Cr Mo 3-UNI EN 10083 |
| GUARNIZIONI / GASKETS | FPM |
| ANELLI ANTIESTRUSIONE / ANTIEXTRUSION RINGS | PTFE |
| MANOPOLA TIPO MA - RA / KNOB TYPE MA - RA | Alluminio/Aluminum GD AISi12 - UNI EN AB 46100 |
| MANOPOLA TIPO MP / KNOB TYPE MP | ABS |
| MANOPOLA TIPO INOX / KNOB TYPE INOX | Acciaio INOX / Stainless Steel AISI 316 |

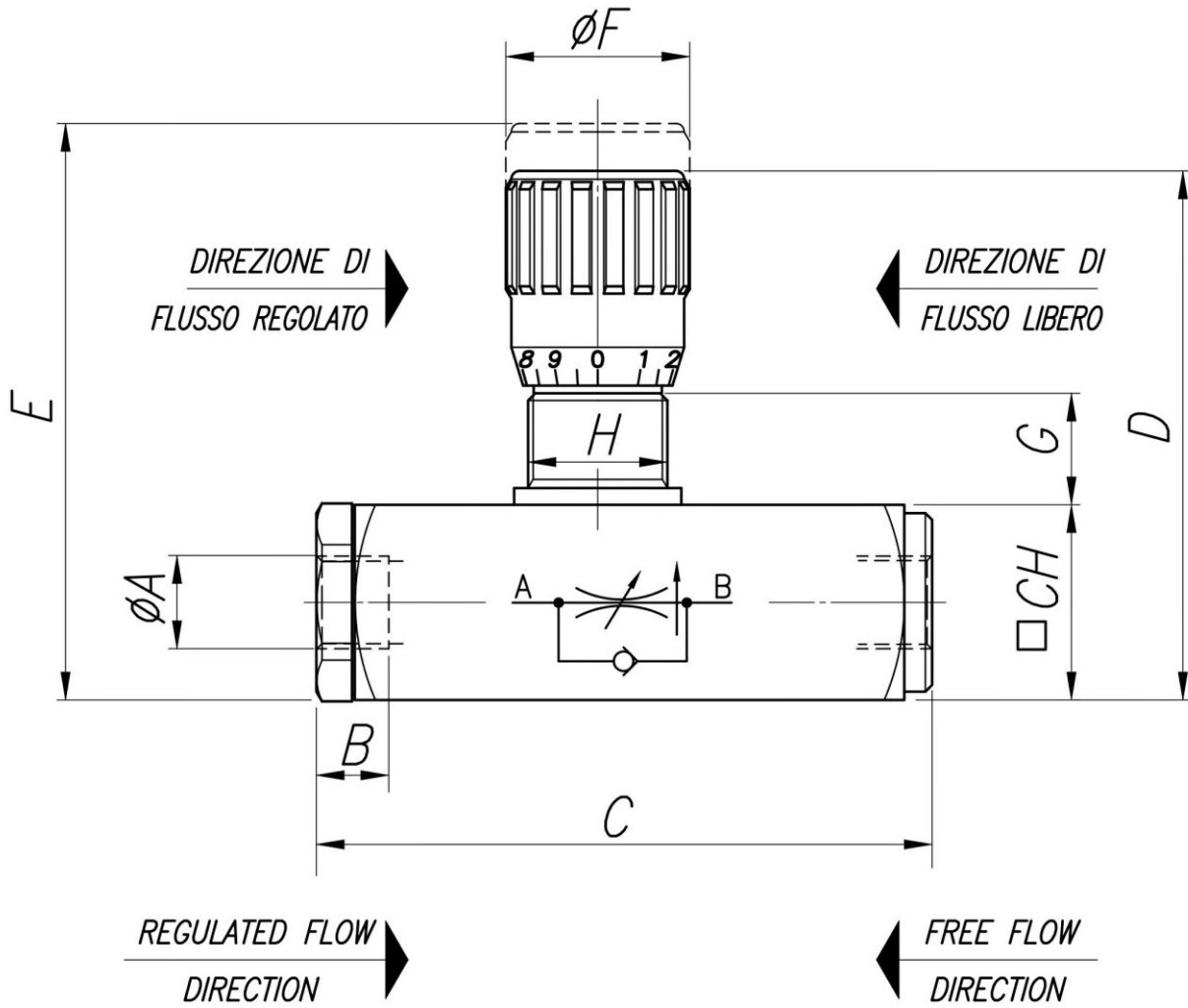


Technical data

| TIPO / TYPE | PRESSIONE ESERCIZIO BAR / WORKING PRESSURE BAR | MIN. ΔP DI FUNZIONAMENTO BAR / MIN. WORKING ΔP BAR | TEMPERATURA ESERCIZIO / WORKING TEMPERATURE | GRADO DI FILTRAZIONE μm / FILTRATION GRADE μm |
|-------------|---|---|--|--|
| 14 | 250 | 5 | -20°C/+160°C | 25 |
| 38 | 250 | 7 | -20°C/+160°C | 25 |
| 12 | 250 | 10 | -20°C/+160°C | 25 |
| 34 | 250 | 10 | -20°C/+160°C | 25 |

Dimensional tables and drawings

| TIPO / TYPE | A UNI 338 | B | C | D | E | ØF | G | H | CH | PESO / WEIGHT KG |
|-------------|--------------|------|-------|------|------|----|----|---------|----|---------------------|
| 14 | 1/4" G | 12,5 | 94 | 81,5 | 88,5 | 27 | 15 | M20x1 | 30 | 0,580 |
| 38 | 3/8" G | 13 | 110,5 | 94,5 | 103 | 33 | 17 | M25x1,5 | 35 | 0,940 |
| 12 | 1/2" G | 15,5 | 137 | 112 | 122 | 38 | 18 | M30x1,5 | 45 | 1,830 |
| 34 | 3/4" G | 17 | 163 | 138 | 150 | 47 | 24 | M40x1,5 | 55 | 3,350 |





Flow rate curves

