



Microfine cartridge double-acting flow control valves

FT 1247/2

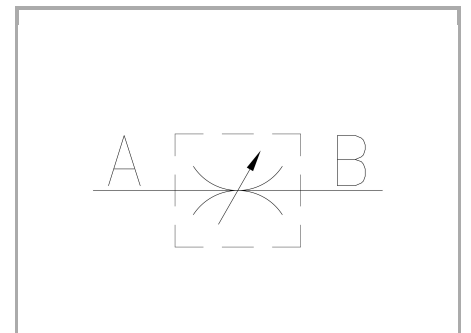
Double-acting flow control valves available only in 1/8" size. Max. working pressure 210 Bar, adjustable oil flow rate from 0,05 to 2,5 Lt./min - METRIC THREADS

Double-acting control

Microfine regulation

METRIC threads

Brass OT58 - UNI5705 Nickel Plated



Technical information

Technical description

It is the solution for application requiring special adjustment of small flow rates. For both hydraulic-pneumatic applications with flow rate up to max. 3 l/min. They can be used also with fluids different from oil, such as: gas and liquids in general. This version has the same characteristics as the series FT 1250 and it maintains its main characteristics: • metallic sealing; • provision for panel mounting; • security against accidental needle withdrawal.

Materials

CORPO / BODY	OT 58-UNI EN 12165
SPILO DI REGOLAZIONE / ADJUSTING NEEDLE	Acciaio/Steel X 10 Cr Ni S 1809-UNI EN 10088-1
GUARNIZIONI / GASKETS	Di serie NBR - A richiesta FPM/Standard NBR-on demand FPM
ANELLI ANTIESTRUSIONE / ANTIEXTRUSION RINGS	PTFE
MANOPOLA TIPO MA / KNOB TYPE MA	GD AISi12 - UNI EN AB 46100
MANOPOLA TIPO MP / KNOB TYPE MP	ABS

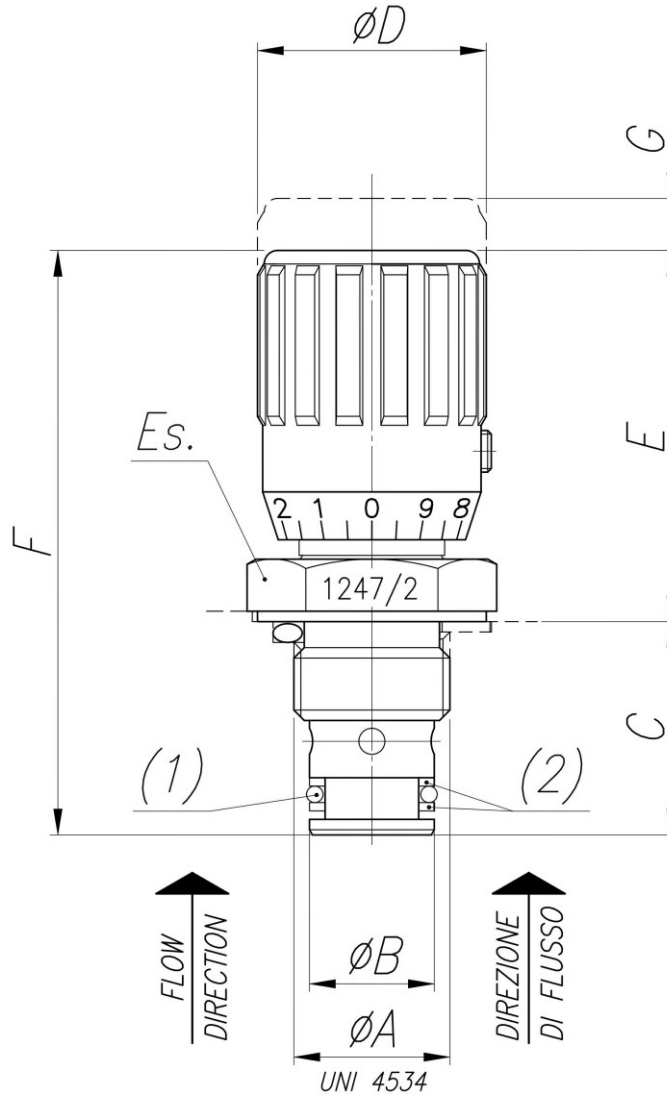
Technical data

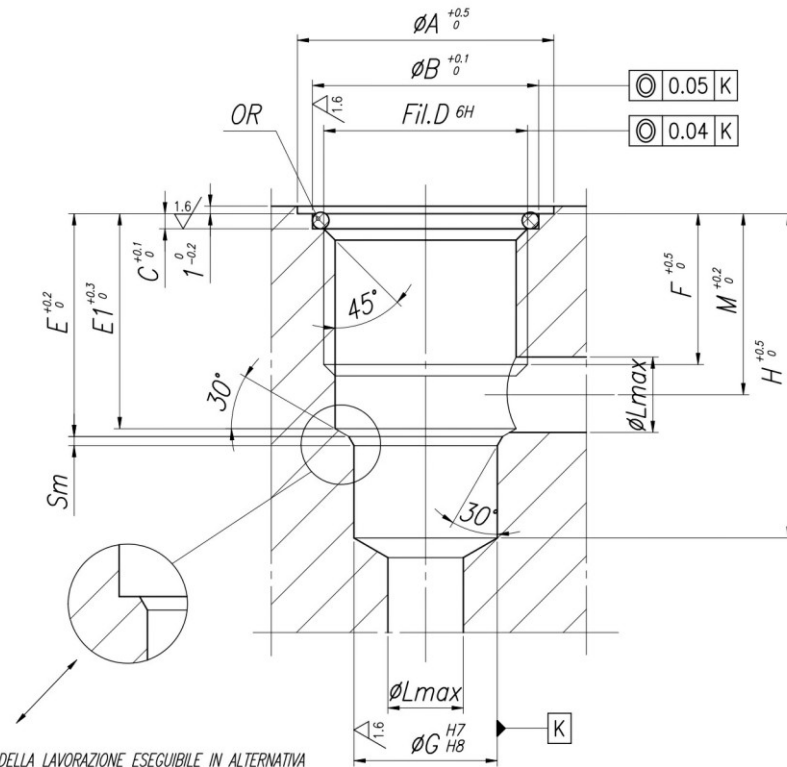
TIPO / TYPE	PRESSIONE ESERCIZIO BAR / WORKING PRESSURE BAR	TEMPERATURA ESERCIZIO / WORKING TEMPERATURE	GRADO DI FILTRAZIONE µm / FILTRATION GRADE µm
18	210	-20°C/+100°C	25



Dimensional tables and drawings

TIPO / TYPE	A UNI 4534	ϕB	C	ϕD	E	F	G	CH	(1) OR	(2) BK	PESO / WEIGHT KG
18	M15x1	12	20,5	22	34,5	55	8	22	108	108	0,069





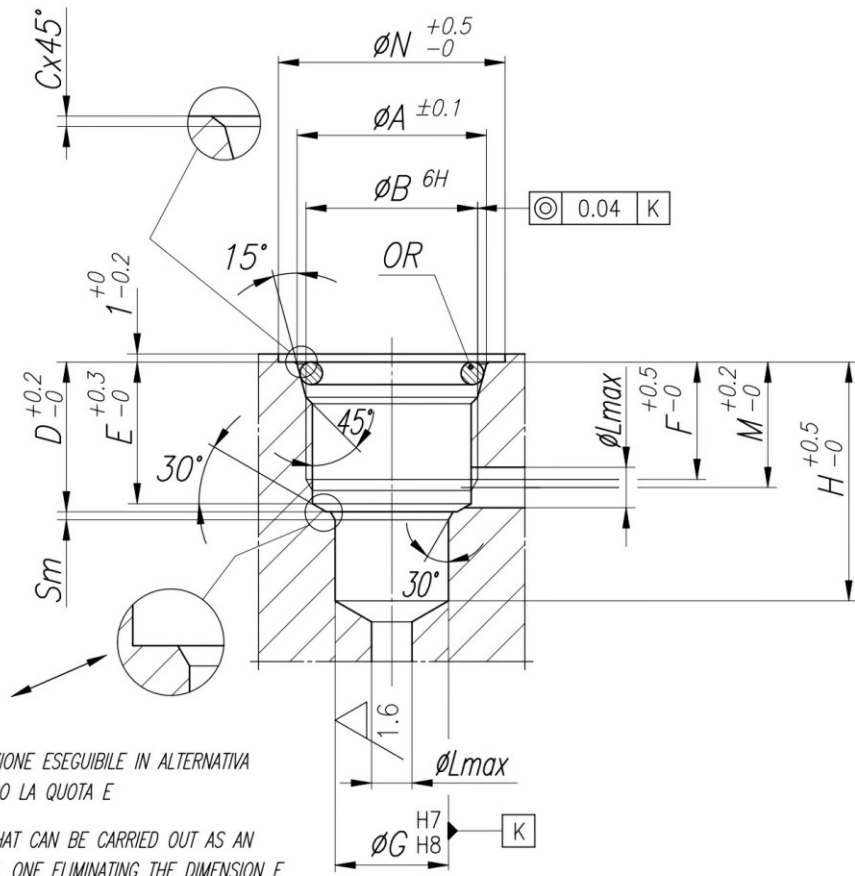
-PARTICOLARE DELLA LAVORAZIONE ESEGUIBILE IN ALTERNATIVA A QUELLA CONICA ELIMINANDO LA QUOTA E1

-DETAIL OF THE MACHINING THAT CAN BE CARRIED OUT AS AN ALTERNATIVE TO THE CONICAL ONE ELIMINATING THE DIMENSION E1

TENUTA REALIZZATA CON GUARNIZIONI OR SU SEDE PIANA

SEALING DONE WITH OR GASKETS ON FLAT SEATING

	ϕA	ϕB	C	$D_{UNI 4534}$	E	E1	F	ϕG	H	ϕL	M	Sm	OR
18	23	19	2	M15x1	14	13	11	12	21.5	4	11.5	0.5	3056



-PARTICOLARE DELLA LAVORAZIONE ESEGUIBILE IN ALTERNATIVA A QUELLA CONICA ELIMINANDO LA QUOTA E
 -DETAIL OF THE MACHINING THAT CAN BE CARRIED OUT AS AN ALTERNATIVE TO THE CONICAL ONE ELIMINATING THE DIMENSION E

TENUTA REALIZZATA CON GUARNIZIONI OR SU SEDE CONICA
 SEALING DONE WITH OR GASKETS ON CONICAL SEATING

	φA	φB UNI 45,34	C	D	E	F	φG	H	φL	M	φN	Sm	OR
18	16.5	M15x1	0.25	14	13	11	12	21.5	4	11.5	23	0.5	2050



Flow rate curves

