



In line stainless steel ball check valves with soft sealing

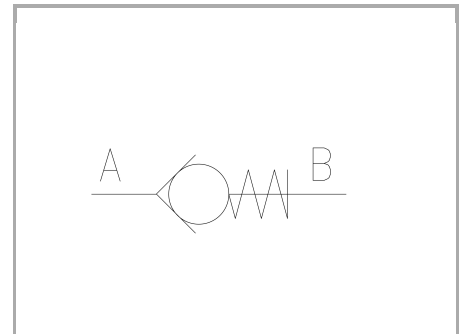
FT 2260/6

In line check valves available from 1/8" to 1" bsp. Max. working pressure 350/320 Bar, oil flow rate up to 160 Lt./min. (depending on the size) - suitable for use with gas and liquids in general

In line

Direct control

Stainless Steel AISI 316



Technical information

Technical description

They are inserted in branches of the circuit where the free flow in one direction is allowed and the return flow in the opposite direction is not possible. In line single-acting valves are of ball type with alignment guide made of composite high resistance material which allows a total passage and an excellent resistance to the use and the breaking strength confirmed by numerous tough tests. The "soft sealing" realized by a gasket made of special material eliminates every leakage also with the use of gas or liquids in general. They can only be supplied with standard cracking pressure 0,35 bar.

Materials

CORPO VALVOLA / BODY VALVE	Acciaio INOX / Stainless Steel AISI 316
MOLLA / SPRING	Acciaio INOX / Stainless Steel AISI 316
SFERA / BALL	NI 100 C6
GUIDA SFERA / BALL GUIDE	Nylon 66 + Fibra carbonio / Carbon fiber
GUARNIZIONI DI TENUTA / SOFT SEAL	HPU

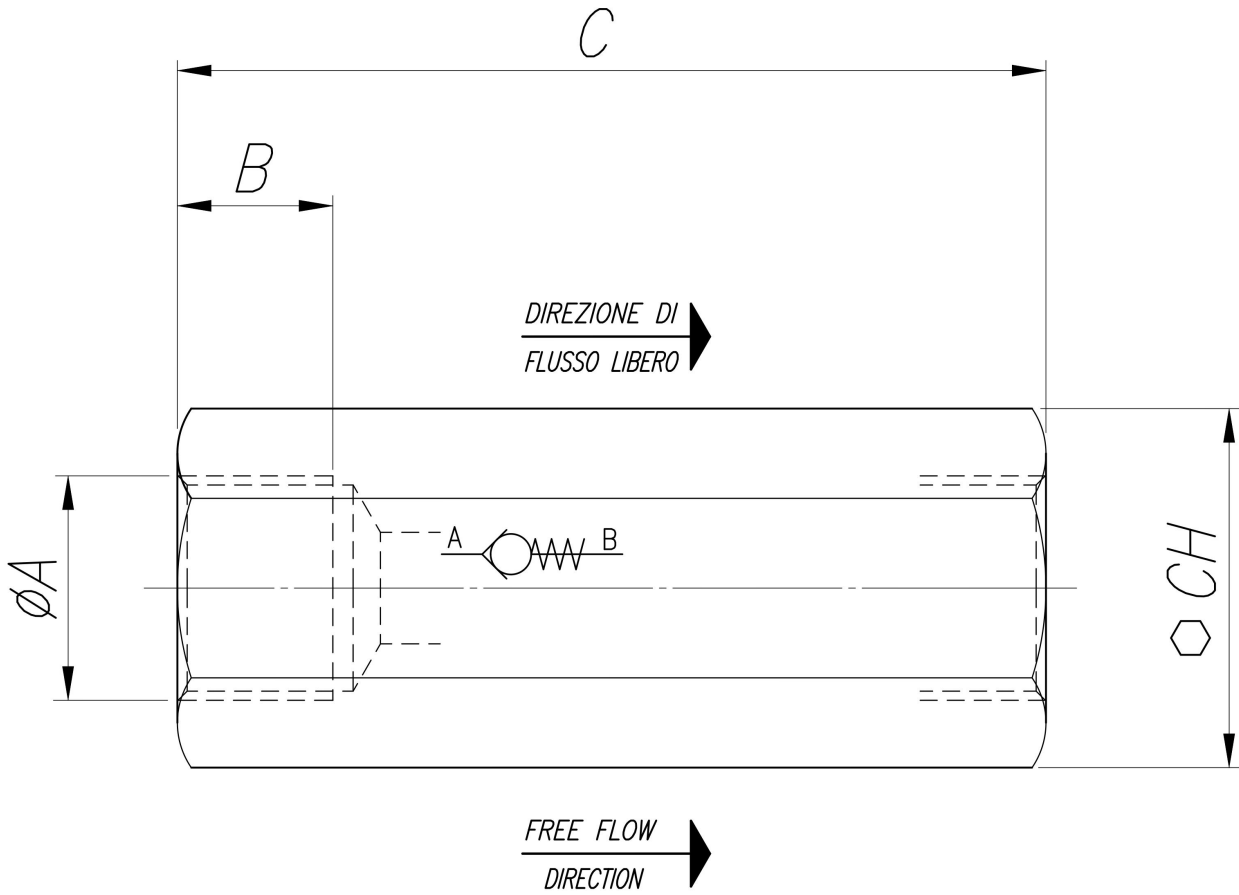


Technical data

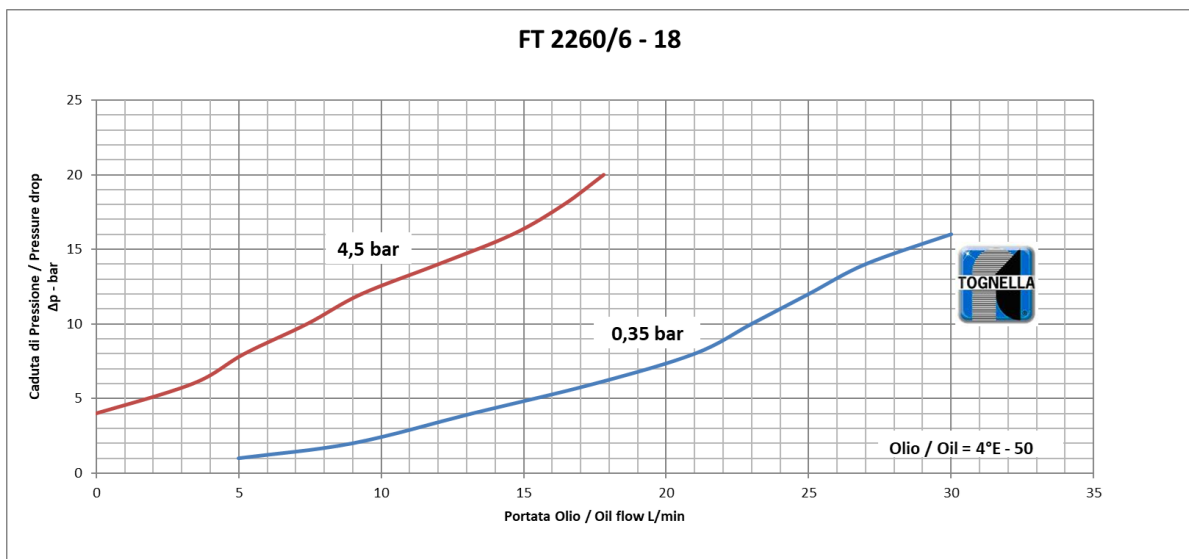
TIPO / TYPE	PRESSIONE ESERCIZIO BAR / WORKING PRESSURE BAR	MIN. PRESSIONE SCOPPIO BAR / MIN. BURSTING PRESSURE BAR	TEMPERATURA ESERCIZIO / WORKING TEMPERATURE	GRADO DI FILTRAZIONE μm / FILTRATION GRADE μm
18	350	1600	-20°C/+120°C	25
14	350	1600	-20°C/+120°C	25
38	350	1600	-20°C/+120°C	25
12	350	1600	-20°C/+120°C	25
34	350	1600	-20°C/+120°C	25
100	320	1300	-20°C/+120°C	25

Dimensional tables and drawings

TIPO / TYPE	A UNI 338	B	C	CH	PESO / WEIGHT KG
18	1/8" G	8,5	41	16	0,054
14	1/4" G	12,5	54	19	0,089
38	3/8" G	13	65	24	0,175
12	1/2" G	16	77	30	0,310
34	3/4" G	20	88	36	0,450
100	1" G	23	108,5	46	0,965

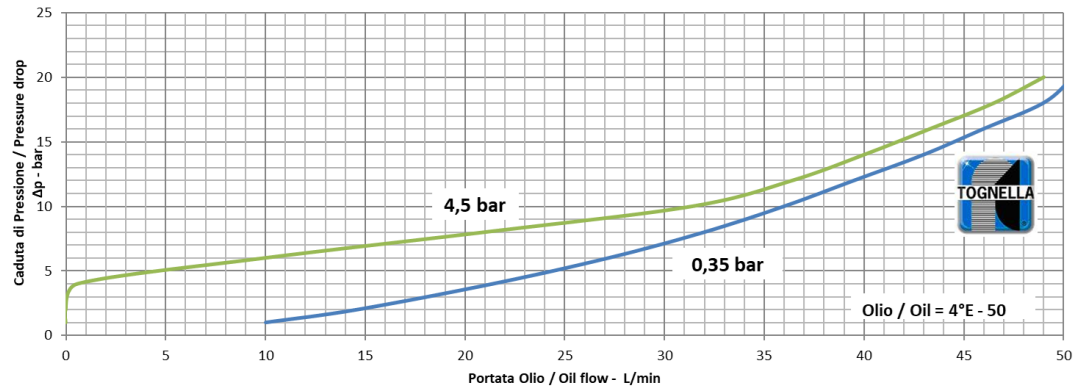


Flow rate curves

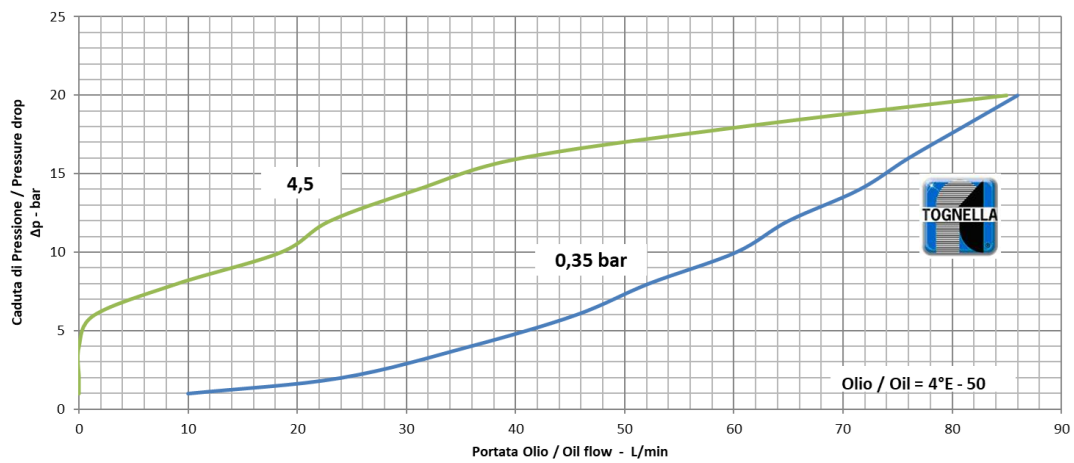




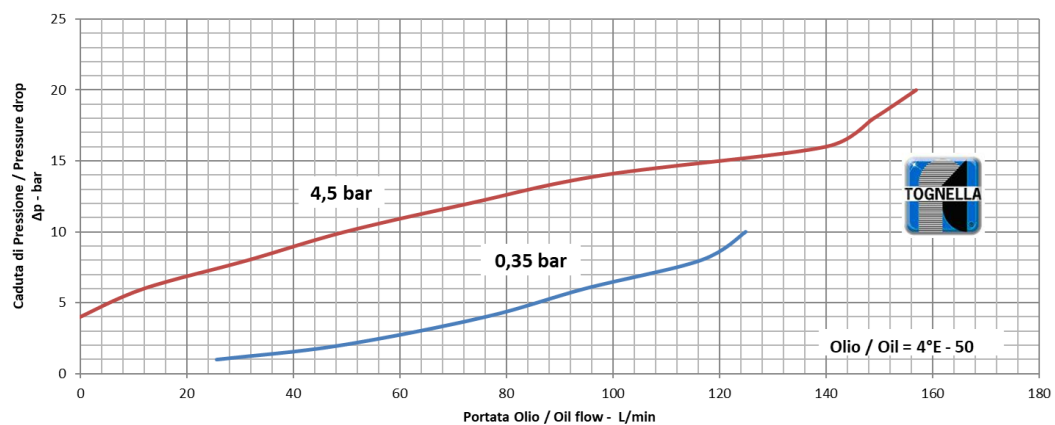
FT 2260/6 - 14



FT 2260/6 - 38

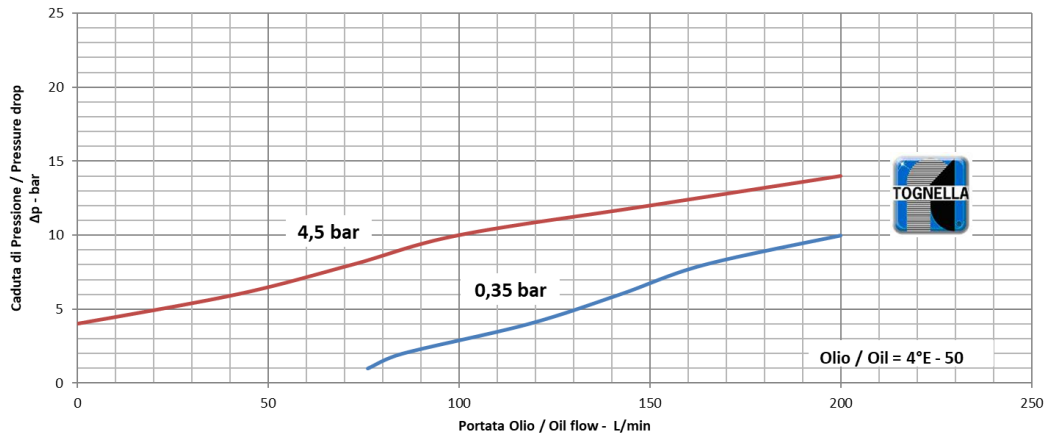


FT 2260/6 - 12





FT 2260/6 - 34



FT 2260/6 - 100

