



Carbon steel Metric threaded cartridge check valves

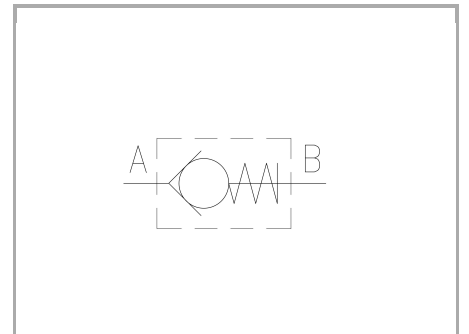
FT 245/6

Cartridge check valves available from 1/4" to 3/4" size - METRIC THREADS. Max. working pressure 320 Bar, oil flow rate up to 180 Lt./min. (depending on the size)

Cartridge mounted

Direct control

Carbon steel



Technical information

Technical description

The valve, assembled into an hydraulic circuit, permits the free flow in a single direction blocking the passage in the opposite one. The valve consists of a body with metric cartridge, a taper piston with high mechanical resistance. The valve is available with different cracking pressure (0,5 standard and 2-4-6-8-10 bar).

Materials

CORPO VALVOLA / BODY VALVE	Acciaio/Steel 11 S Mn Pb 37-UNI EN 10087
VALVOLA DI RITEGNO / CHECK VALVE	Acciaio/Steel 39 Ni Cr Mo 3-UNI EN 10083
MOLLA / SPRING	Acciaio/Steel C 85-UNI EN 10089
TAPPO A VITE / SCREW PLUG	Acciaio/Steel 11 S Mn Pb 37-UNI EN 10087

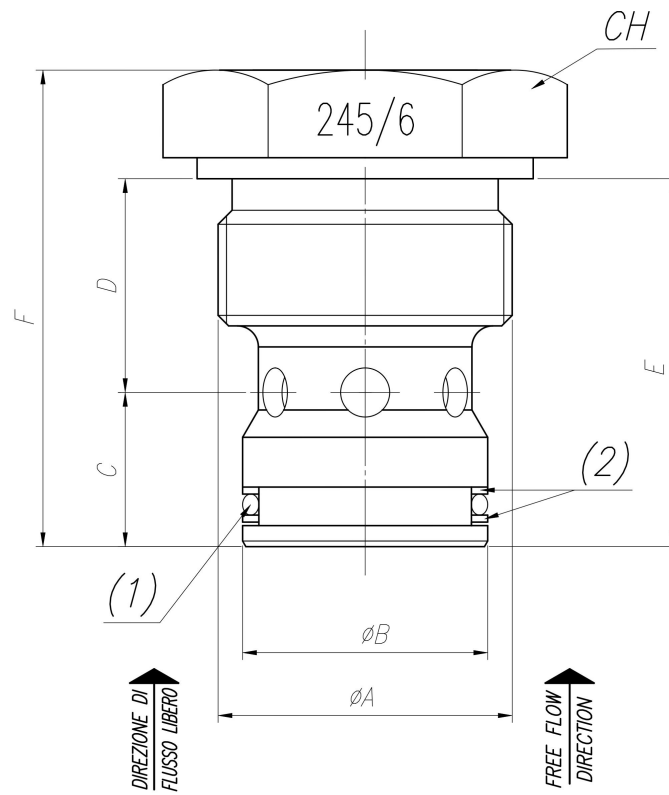
Technical data

TIPO / TYPE	PRESSIONE ESERCIZIO BAR / WORKING PRESSURE BAR	MIN. PRESSIONE SCOPPIO BAR / MIN. BURSTING PRESSURE BAR	TEMPERATURA ESERCIZIO / WORKING TEMPERATURE	GRADO DI FILTRAZIONE µm / FILTRATION GRADE µm
14	320	1300	-20°C/+100°C	25
38	320	1300	-20°C/+100°C	25
12	320	1300	-20°C/+100°C	25
34	320	1300	-20°C/+100°C	25



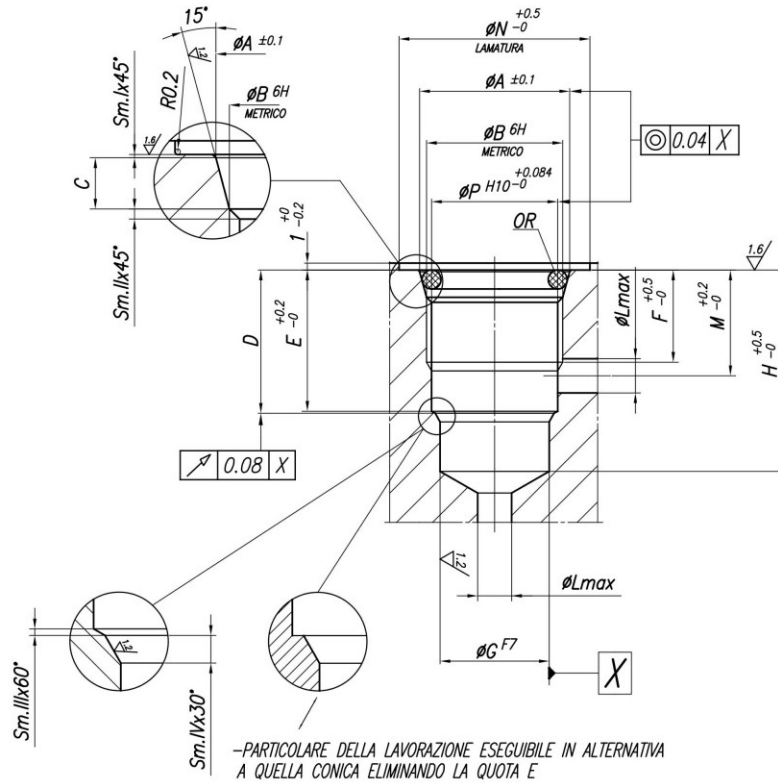
Dimensional tables and drawings

TIPO / TYPE	ØA UNI 4534	ØB	C	D	E	F	CH	OR 1	OR 2	PESO / WEIGHT KG
14	M20x1,5	16	11,5	19	30,5	36,5	27	2050	267/2.022.00-38	0,070
38	M27x2	19	16,5	23,5	40	47	32	2062	267/2.022.00-12	0,140
12	M33x2	27	19	25,5	44,5	58,5	41	130	267/2.022.00-34	0,295
34	M42x2	35	22	30,5	52,5	68	50	3118	267/2.022.00-34	0,530





TENUTA REALIZZATA CON GUARNIZIONI OR SU SEDE CONICA
 SEALING DONE WITH OR GASKETS ON CONICAL SEATING



-PARTICOLARE DELLA LAVORAZIONE ESEGUIBILE IN ALTERNATIVA A QUELLA CONICA ELIMINANDO LA QUOTA E

-DETAIL OF THE MACHINING THAT CAN BE CARRIED OUT AS AN ALTERNATIVE TO THE CONICAL ONE ELIMINATING THE DIMENSION E

	ϕA	ϕB	C	D	E	F	ϕG	H	ϕL	M	ϕN	ϕP	Sm.I	Sm.II	Sm.III	Sm.IV	OR
14	22	M20x1.5	3.74	21	20.7	13.5	16	33.5	8	16.2	28	18.5	0.25	0.75	0.3	1.3	3068
38	29.1	M27x2	3.92	30	28.7	20	19	43	10	24	34	25	0.3	1	1.3	1.3	132
12	36	M33x2	5.6	32.5	32	20	27	47.5	13	25	43	31	0.3	1	0.5	1.3	4112
34	45	M42x2	5.6	38.5	37.6	23.5	35	57	16	29	60	40	0.3	1	0.9	1.6	4150



Flow rate curves

