



## Carbon steel plate check valves

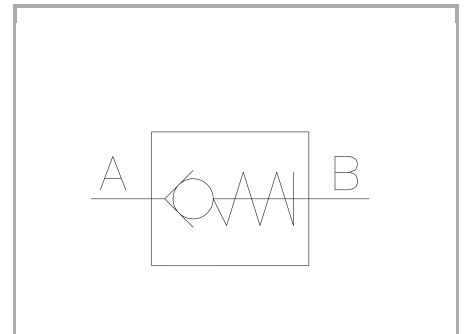
### FT 280/6

Plate check valves available in sizes from 1/4" to 1/2" and Cetop 3 (03). Max. working pressure 250 Bar, oil flow rate up to 130 Lt./min. (depending on the size)

**Plate mounted**

**Direct control**

**Carbon steel**



## Technical information

### Technical description

They are inserted in circuit branches where a free flow circulation is required in one direction and passage obstruction in the opposite one. The plate check-valves are both of ball type with alignment guide, made of composite Material with very high mechanical resistance, which allows a total passage and exceptional resistance to use and breakage, confirmed by the numerous and tough tests to which they were submitted. They may be supplied with two different cracking pressure (0,35 standard and 4,5 bar). They are provided with plate connections mod. CETOP 03 or interchangeable with the widely used valves. The connection O-rings are equipped in series. Max. working pressure 250 bar.

### Materials

<b>CORPO VALVOLA / BODY VALVE</b>	<b>Acciaio/Steel 11 S Mn Pb 37-UNI EN 10087</b>
<b>MOLLA / SPRING</b>	<b>Acciaio/Steel AISI 302</b>
<b>TAPPO A VITE / SCREW PLUG</b>	<b>Acciaio/Steel 35 S Mn Pb 10-UNI EN 10087</b>
<b>SFERA / BALL</b>	<b>Acciaio/Steel -UNI 100 C 6</b>
<b>GUIDA SFERA / BALL GUIDE</b>	<b>NYLON 66 + FIBRA CARBONIO / NYLON 66 + CARBON FIBRE</b>



## Technical data

TIPO / TYPE	PRESSIONE ESERCIZIO BAR / WORKING PRESSURE BAR	TEMPERATURA ESERCIZIO / WORKING TEMPERATURE	GRADO DI FILTRAZIONE $\mu\text{m}$ / FILTRATION GRADE $\mu\text{m}$
03	250	-20°C/+100°C	25
14	250	-20°C/+100°C	25
38	250	-20°C/+100°C	25
12	250	-20°C/+100°C	25

## Dimensional tables and drawings

FT 280/6-03

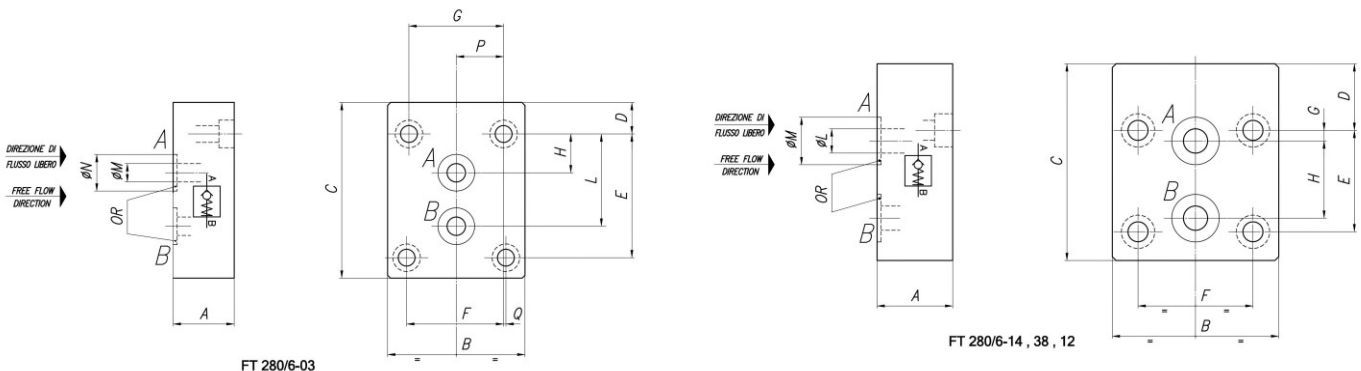
TIPO / TYPE	A	B	C	D	E	F	G	H
03	20	45	63,5	10,3	40,5	31,75	31	12,7

TIPO / TYPE	L	$\phi\text{M}$	$\phi\text{N}$	P	Q	OR	VITI / SCREWS	PESO / WEIGHT KG
03	30,2	6	12	15,5	0,75	108	M5x25	0,350

FT 280/6-14, 38, 12

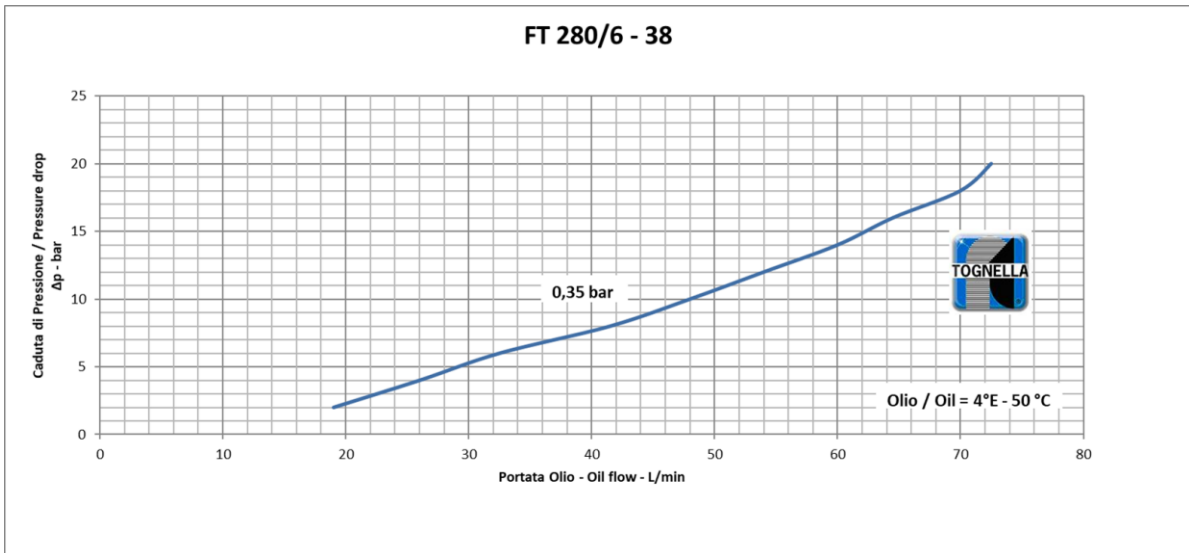
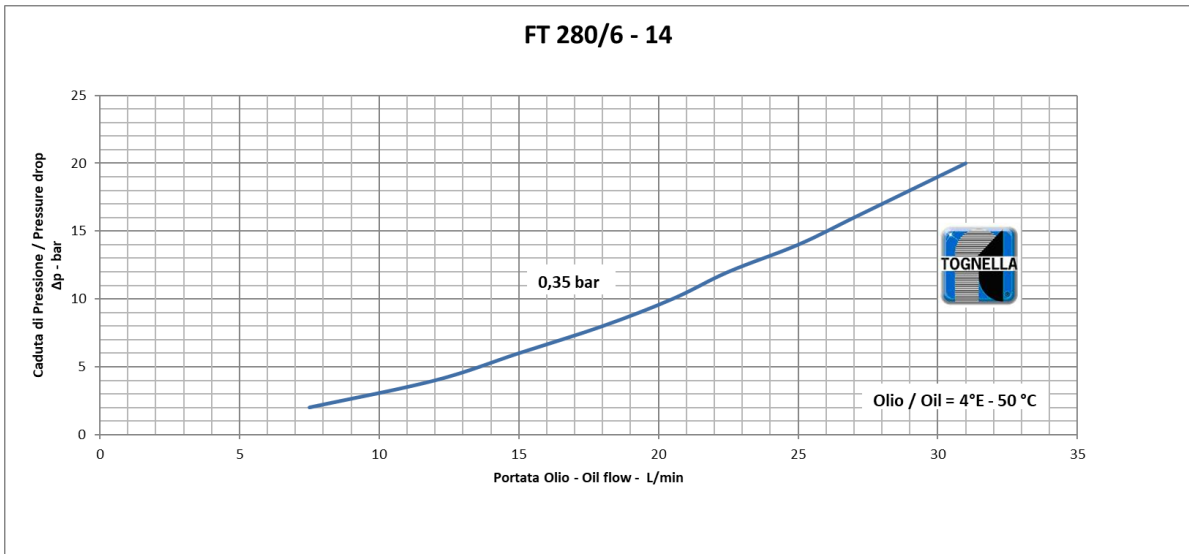
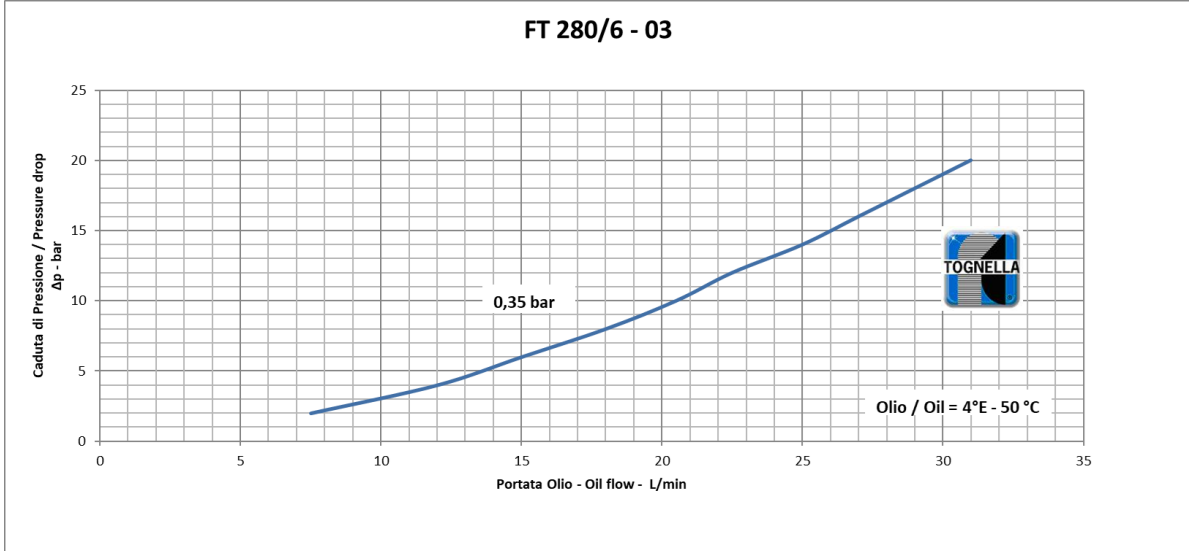
TIPO / TYPE	A	B	C	D	E	F	G	H
14	20	50	63,5	18	35	33,5	5	25,5
38	25	55	70	22	33,5	38	3,5	25,5
12	30	65	80	30,5	38	44,5	4	30

TIPO / TYPE	$\phi\text{L}$	$\phi\text{M}$	OR	VITI / SCREWS	PESO / WEIGHT KG
14	6	12,7	2037	M6x25	0,407
38	8	15,7	2050	M6x30	0,606
12	11	19,7	119	M6x35	1,095





## Flow rate curves





### FT 280/6 - 12

