



Double-acting flow control valves Cetop 3 - ADJUSTMENT HANDWHEEL

FT 357/2

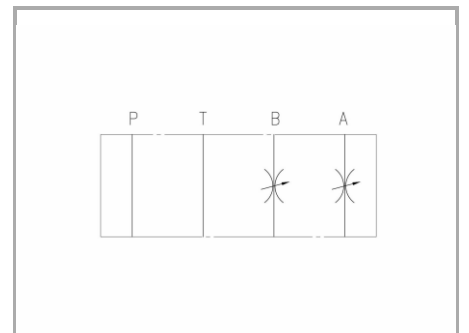
Double-acting flow control stackable valves Cetop3 available with controlled flow on A-B-P or double A+B ports, max. working pressure 320 Bar, adjustable oil flow rate from 0,5 to 35 Lt./min.

Cetop 3 valves - NG6

Flow control

Double-acting control

Carbon steel



Technical information

Technical description

Flow control valves, not compensated, for modular mounting with subplate surface in accordance with ISO 4401-03. It allows a fine fluid regulation in two directions even with low flow rate. Version with adjustment handwheel for flow regulation, that enables its locking thanks to the screw it is equipped with.

Materials

CORPO VALVOLA / BODY VALVE	Acciaio/Steel 11 S Mn Pb 37-UNI EN 10087
CORPO CARTUCCIA / CARTRIDGE BODY	Acciaio/Steel 11 S Mn Pb 37-UNI EN 10087
SPILO DI REGOLAZIONE / ADJUSTING NEEDLE	Acciaio legato/Alloy Steel
GUARNIZIONI / GASKETS	Di serie NBR - A richiesta FPM/Standard NBR-on demand FPM
ANELLI ANTIESTRUSIONE / ANTIEXTRUSION RINGS	PTFE
MANOPOLA TIPO MA / KNOB TYPE MA	Alluminio/Aluminum GD AlSi12- UNI EN AB 46100

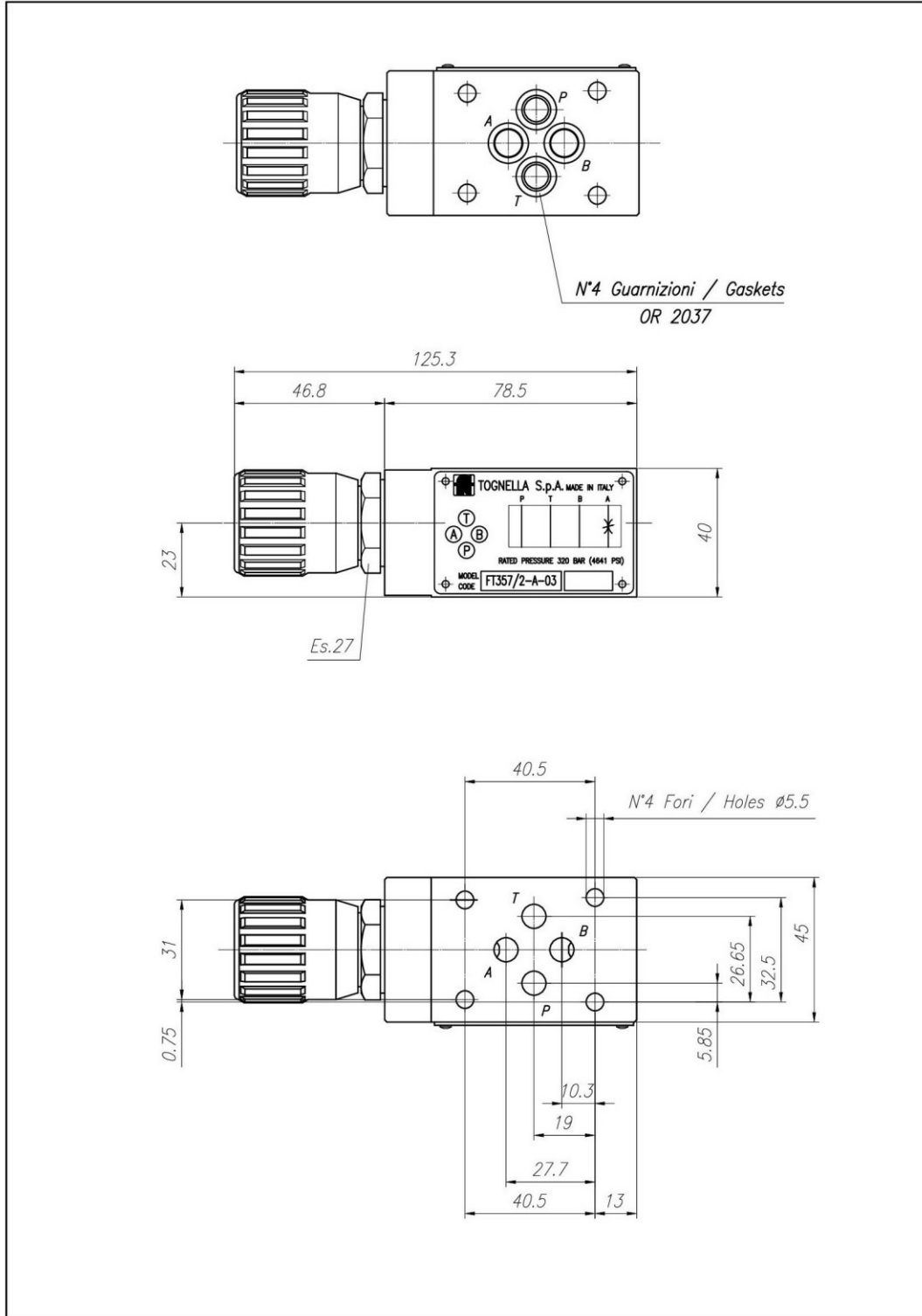


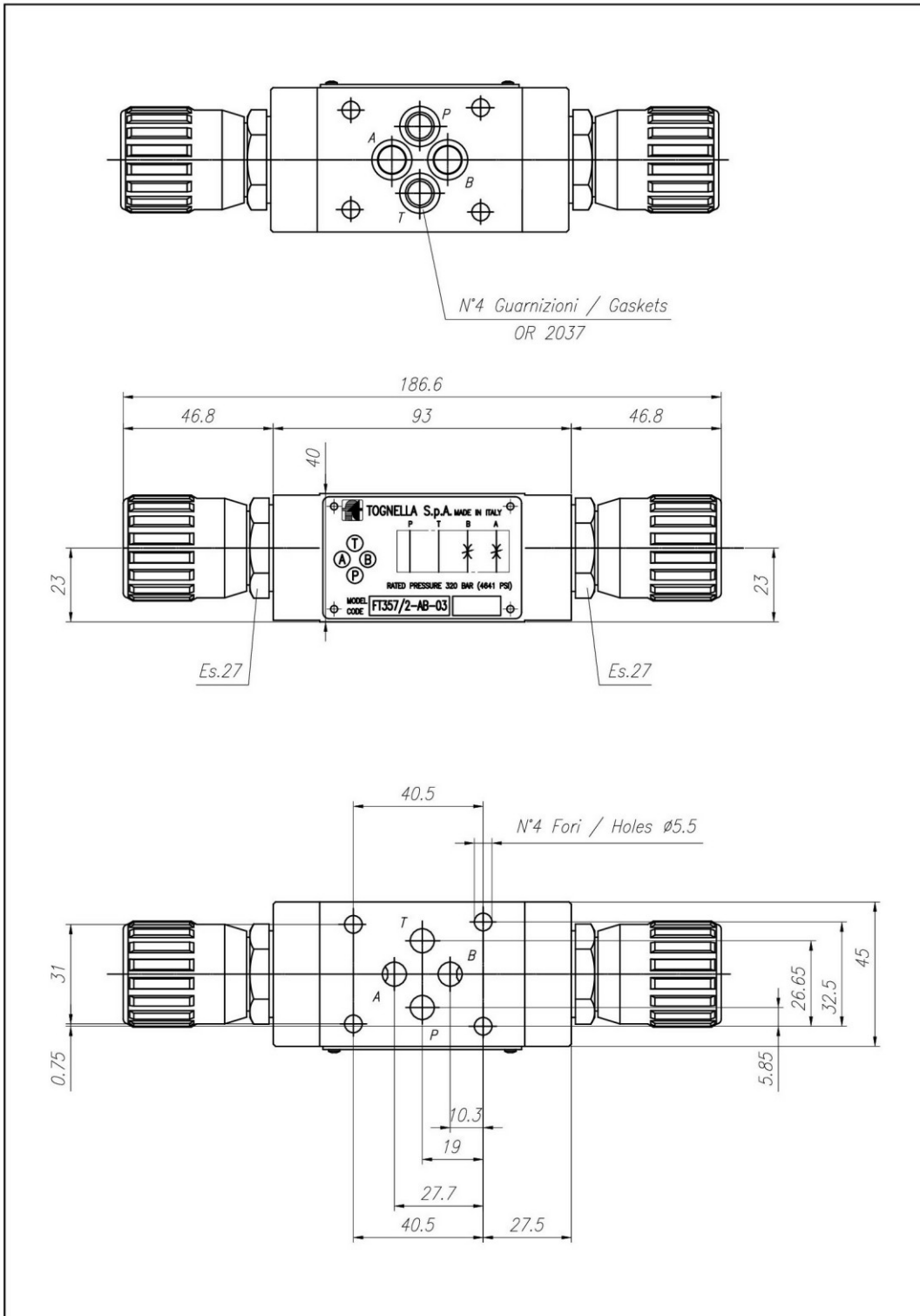
Technical data

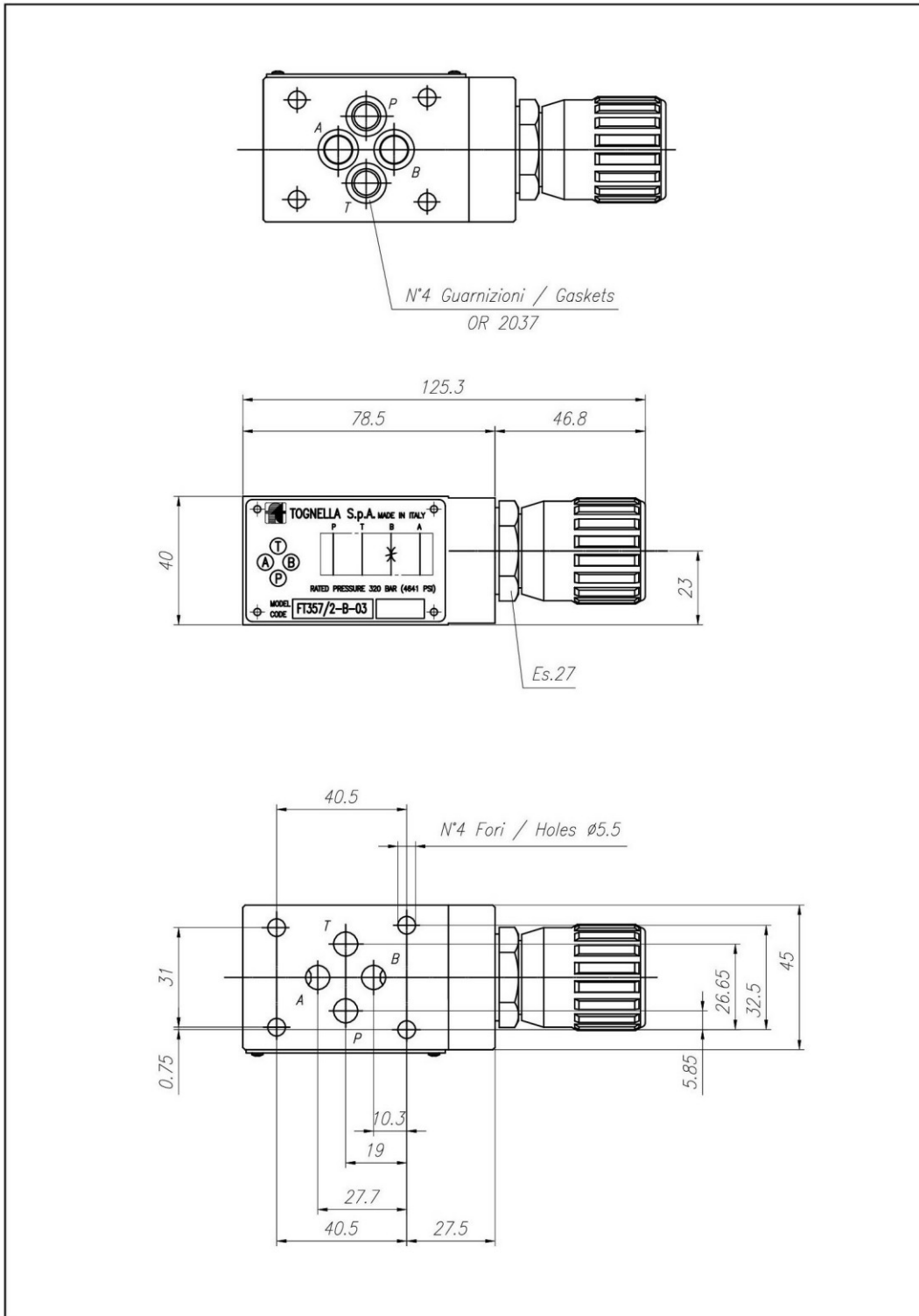
TIPO / TYPE	PRESSIONE ESERCIZIO BAR / WORKING PRESSURE BAR	TEMPERATURA ESERCIZIO / WORKING TEMPERATURE	CLASSE DI CONTAMINAZIONE FLUIDO / FLUID CONTAMINATION CLASS
A	320	-20°C/+80°C	ISO 4406 19/17/14
AB	320	-20°C/+80°C	ISO 4406 19/17/14
B	320	-20°C/+80°C	ISO 4406 19/17/14
P	320	-20°C/+80°C	ISO 4406 19/17/14
T	320	-20°C/+80°C	ISO 4406 19/17/14

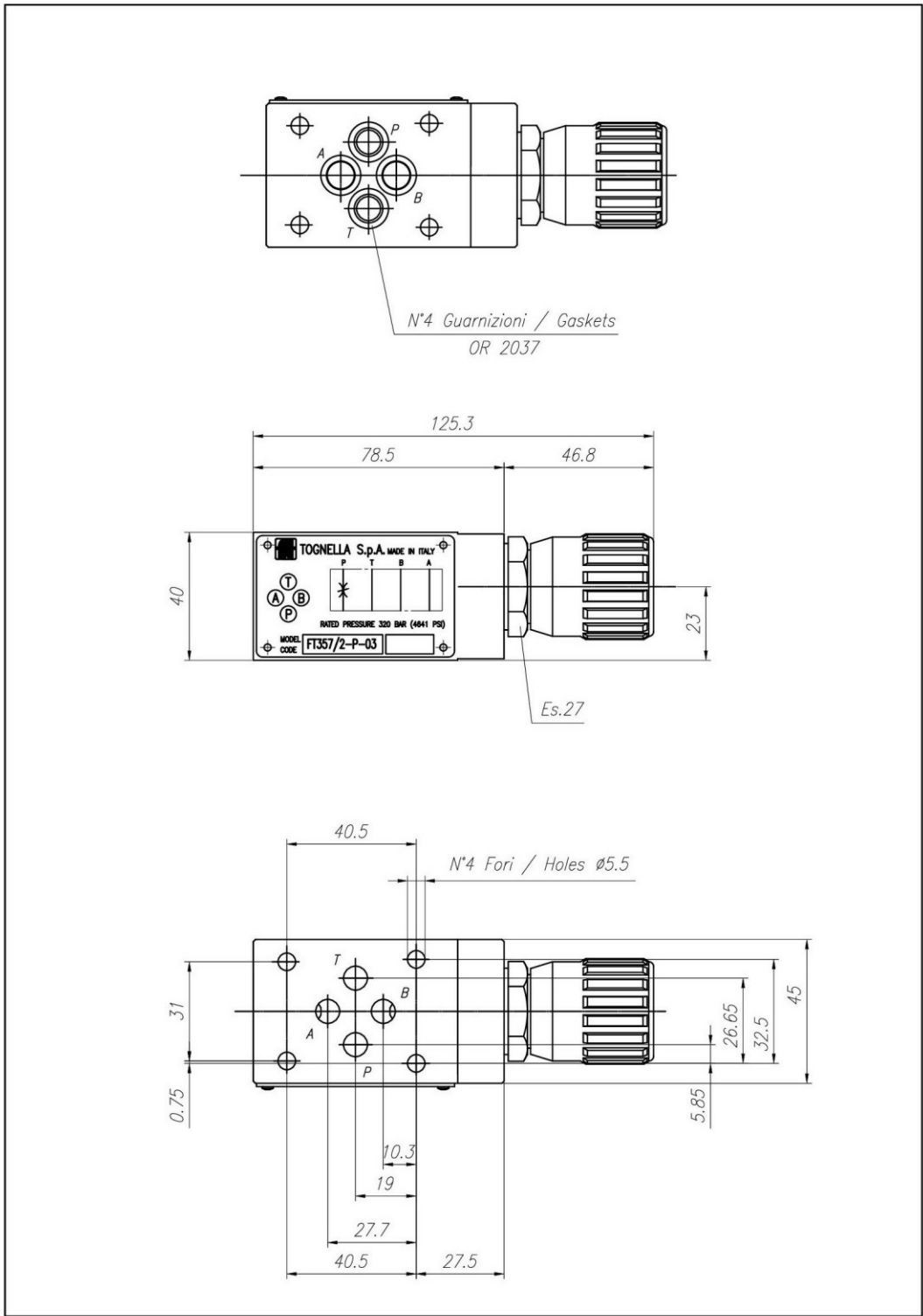


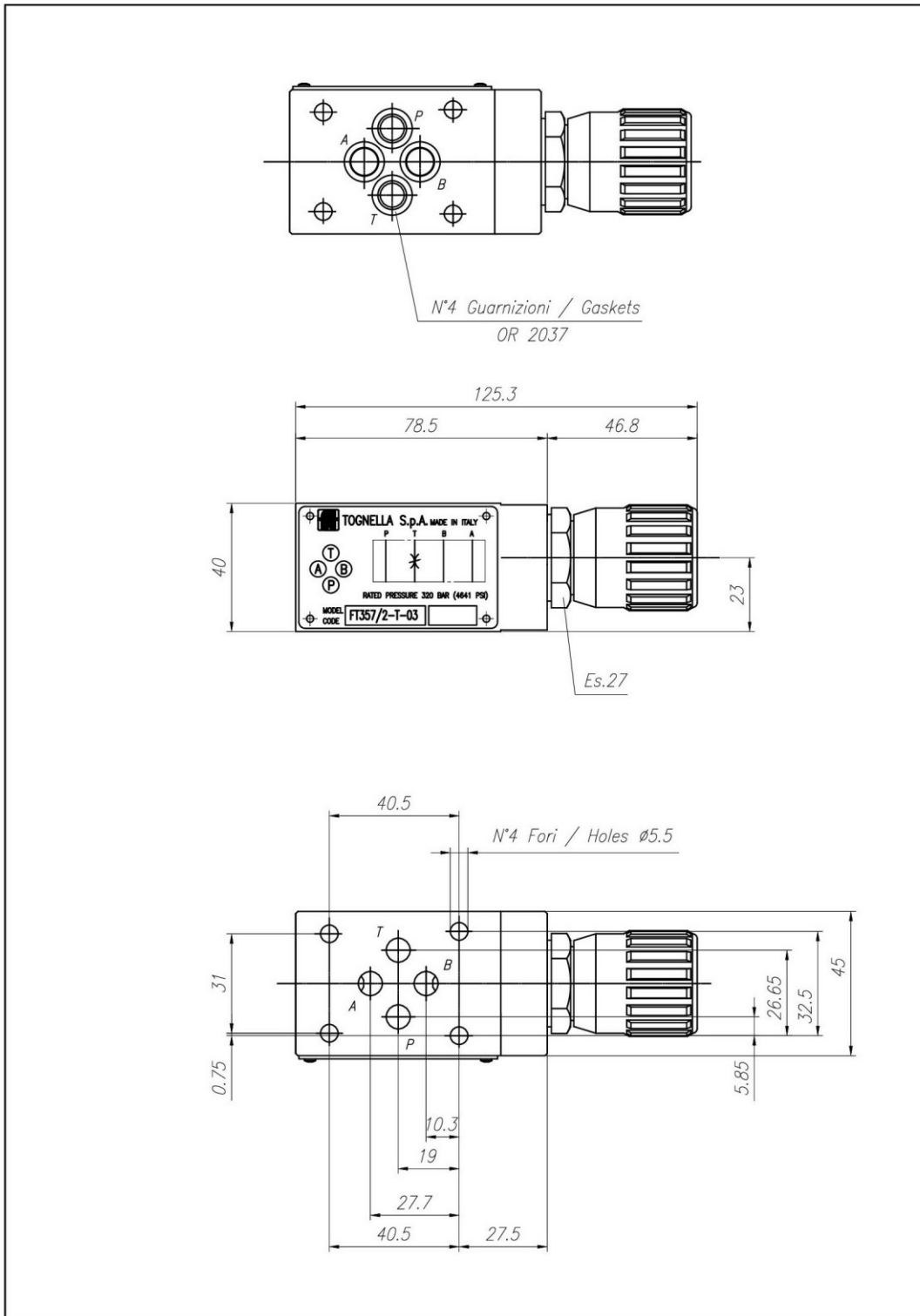
Dimensional tables and drawings













Flow rate curves

