



## Single-acting flow control valves Cetop 3

### FT 358/5

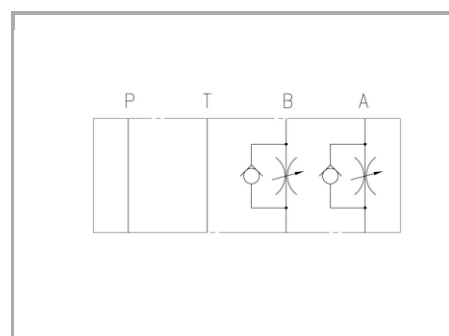
Single-acting flow control stackable valves Cetop3 available with controlled flow on A-B or double A+B ports, max. working pressure 320 Bar, adjustable oil flow rate from 0,5 to 35 Lt./min.

**Cetop 3 valves - NG6**

**Flow control**

**Single-acting control (Meter-in)**

**Carbon steel**



## Technical information

### Technical description

Flow control valve, not compensated, for modular mounting with subplate surface according to ISO 4401 (CETOP RP 121H). It permits a fine fluid regulation in a direction even with low flow rate, allowing the free flow in the opposite one. Single regulation available on A or B or double on A+B. Version with adjustment screw, equipped with lock nut for flow rate regulation.

### Materials

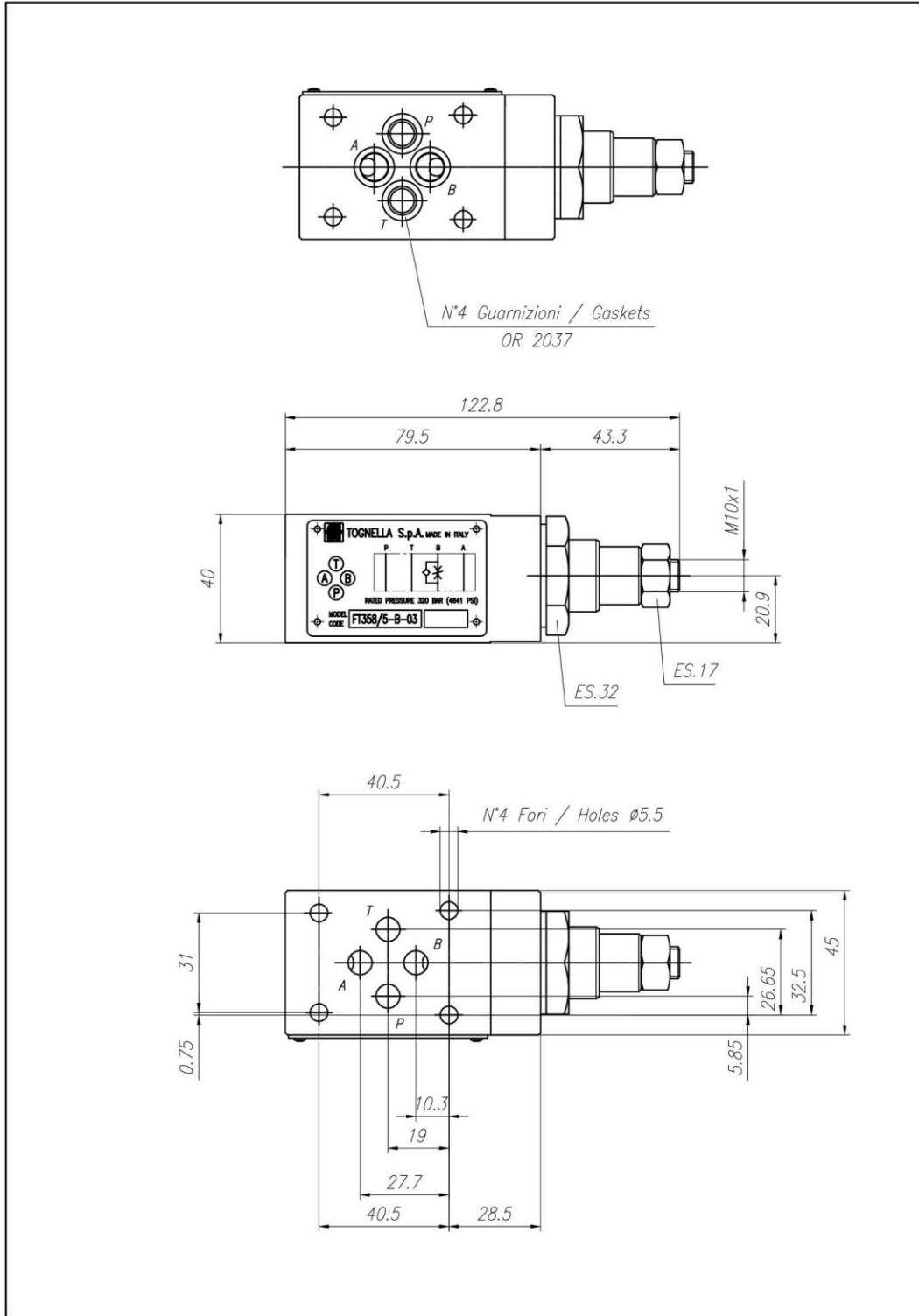
<b>CORPO VALVOLA / BODY VALVE</b>	<b>Acciaio/Steel 11 S Mn Pb 37-UNI EN 10087</b>
<b>CORPO CARTUCCIA / CARTRIDGE BODY</b>	<b>Acciaio/Steel 11 S Mn Pb 37-UNI EN 10087</b>
<b>SPILLO DI REGOLAZIONE / ADJUSTING NEEDLE</b>	<b>Acciaio legato/Alloy Steel</b>
<b>GUARNIZIONI / GASKETS</b>	<b>Di serie NBR - A richiesta FPM/Standard NBR-on demand FPM</b>
<b>ANELLI ANTIESTRUSIONE / ANTIEXTRUSION RINGS</b>	<b>PTFE</b>
<b>MANOPOLA TIPO MA / KNOB TYPE MA</b>	<b>Alluminio/Aluminum GD AlSi12- UNI EN AB 46100</b>

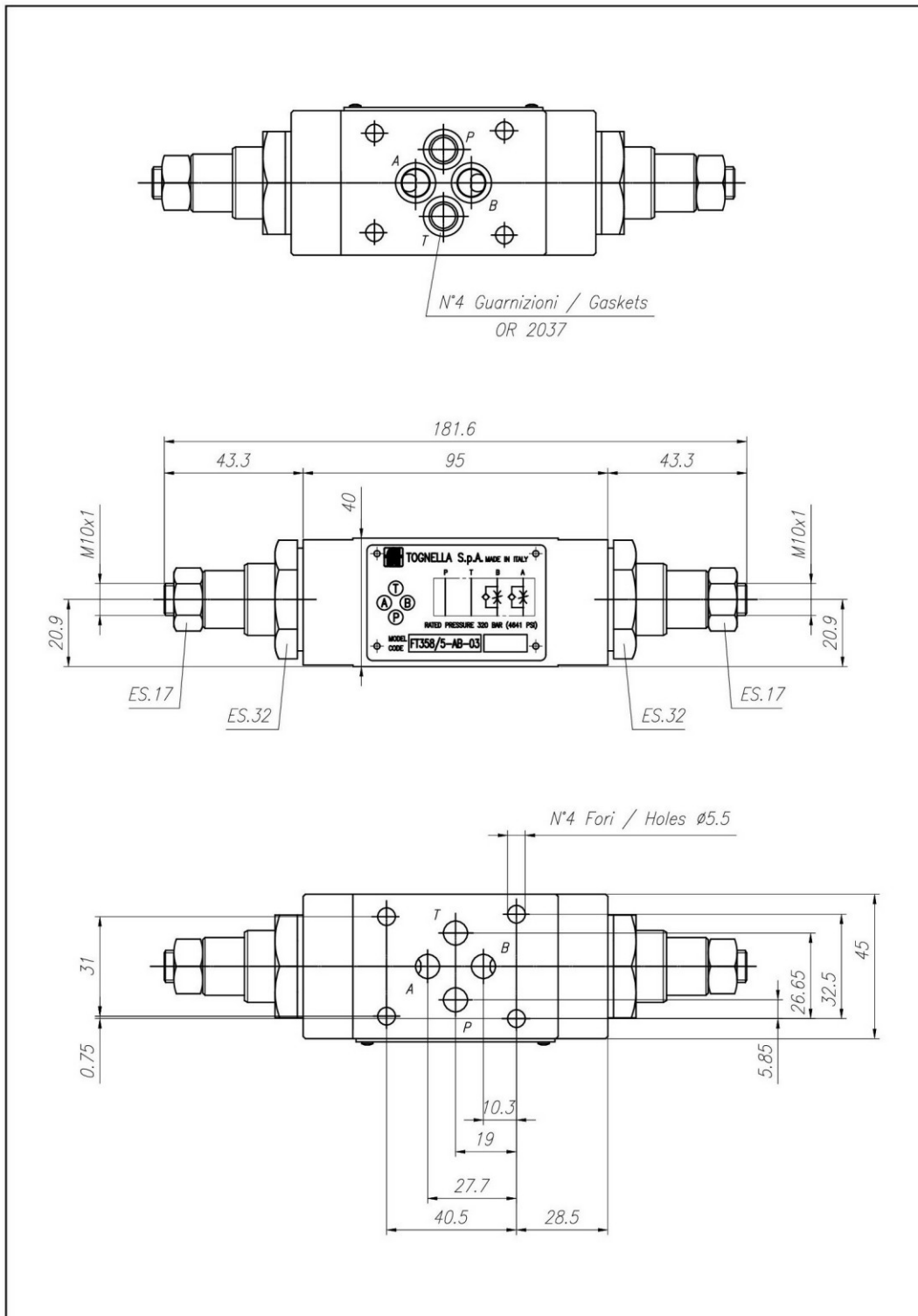
### Technical data

<b>TIPO / TYPE</b>	<b>PRESSIONE ESERCIZIO BAR / WORKING PRESSURE BAR</b>	<b>TEMPERATURA ESERCIZIO / WORKING TEMPERATURE</b>	<b>CLASSE DI CONTAMINAZIONE FLUIDO / FLUID CONTAMINATION CLASS</b>
<b>A</b>	<b>320</b>	<b>-20°C/+80°C</b>	<b>ISO 4406 19/17/14</b>
<b>AB</b>	<b>320</b>	<b>-20°C/+80°C</b>	<b>ISO 4406 19/17/14</b>
<b>B</b>	<b>320</b>	<b>-20°C/+80°C</b>	<b>ISO 4406 19/17/14</b>



## Dimensional tables and drawings







## Flow rate curves

