



Single-acting flow control valves Cetop 3 - ADJUSTMENT HANDWHEEL

FT 357/5

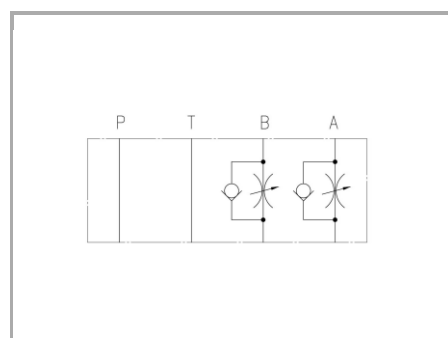
Single-acting flow control stackable valves Cetop3 available with controlled flow on A-B or double A+B ports, max. working pressure 320 Bar, adjustable oil flow rate from 0,5 to 35 Lt./min.

Cetop 3 valves - NG6

Flow control

Single-acting control (Meter-out)

Carbon steel



Technical information

Technical description

Flow control valve, not compensated, for modular mounting with subplate surface according to ISO 4401-03. It allows a fine fluid regulation in a direction even with low flow rate, allowing the free flow in the opposite one. Single regulation available on A or B or double on A+B. Version with adjustment handwheel for flow rate regulation, it enables its locking thanks to the screw it is equipped with.

Materials

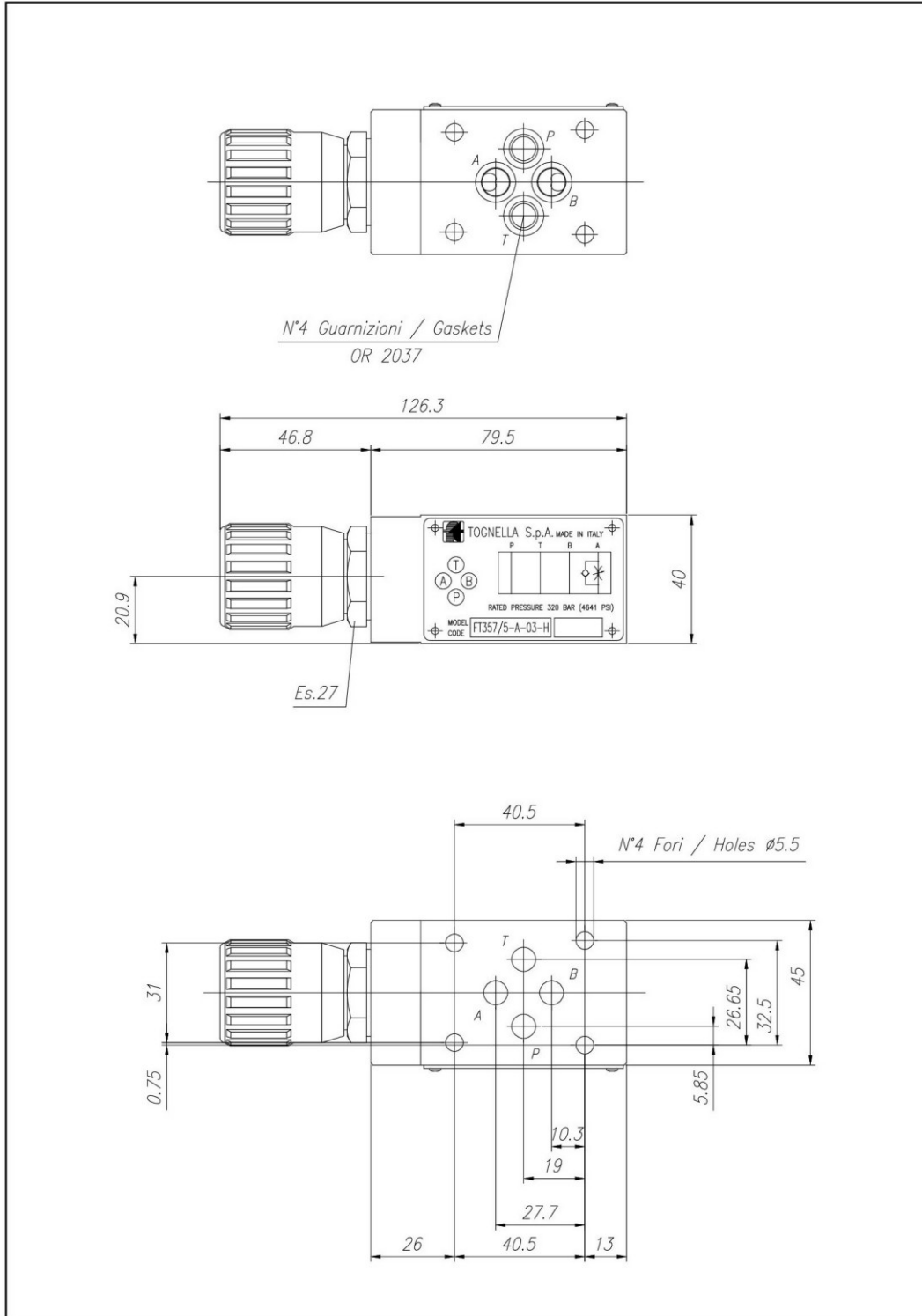
| | |
|---|---|
| CORPO VALVOLA / BODY VALVE | Acciaio/Steel 11 S Mn Pb 37-UNI EN 10087 |
| CORPO CARTUCCIA / CARTRIDGE BODY | Acciaio/Steel 11 S Mn Pb 37-UNI EN 10087 |
| SPILLO DI REGOLAZIONE / ADJUSTING NEEDLE | Acciaio legato/Alloy Steel |
| GUARNIZIONI / GASKETS | Di serie NBR - A richiesta FPM/Standard NBR-on demand FPM |
| ANELLI ANTIESTRUSIONE / ANTIEXTRUSION RINGS | PTFE |
| MANOPOLA TIPO MA / KNOB TYPE MA | Alluminio/Aluminum GD AlSi12- UNI EN AB 46100 |

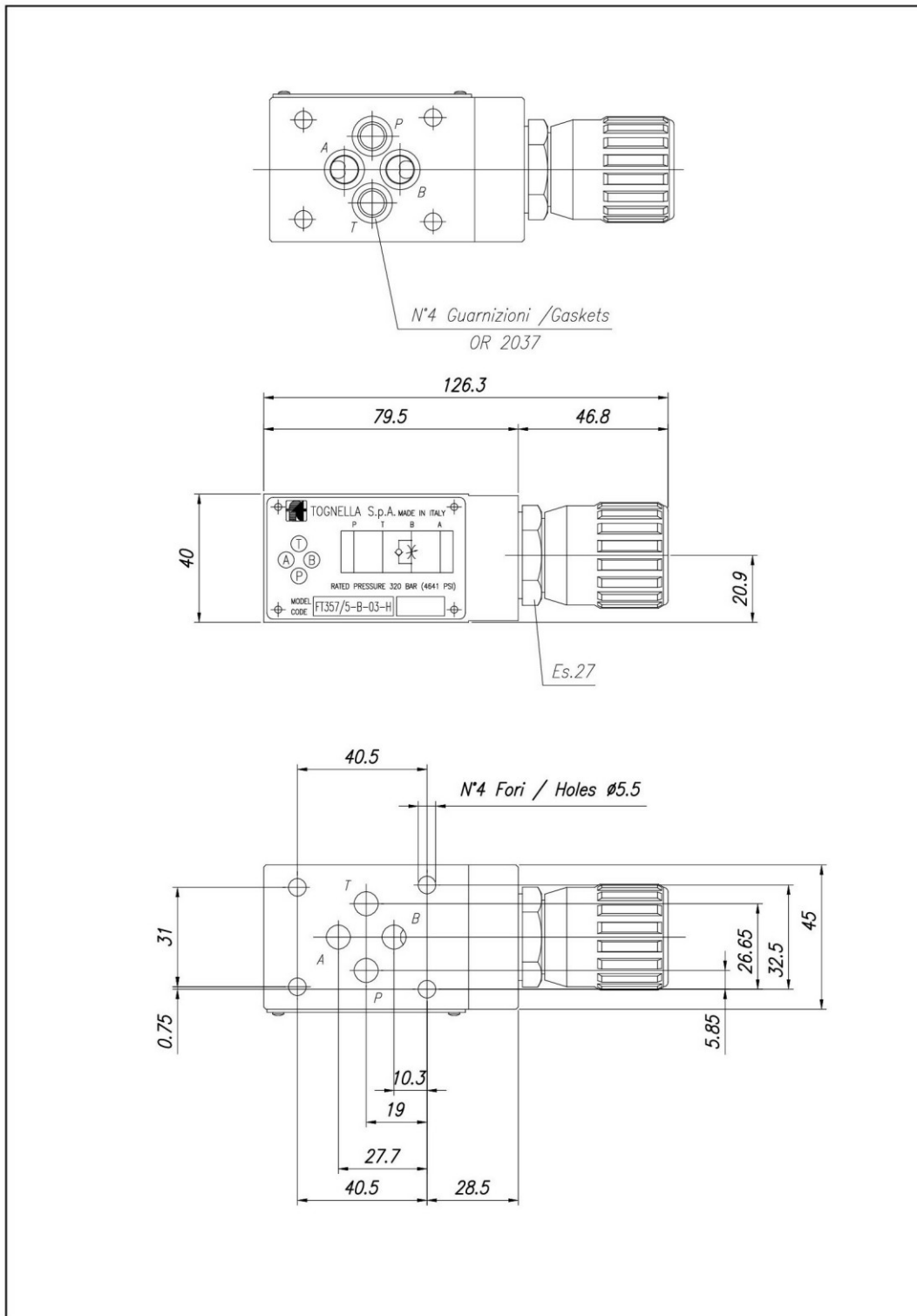
Technical data

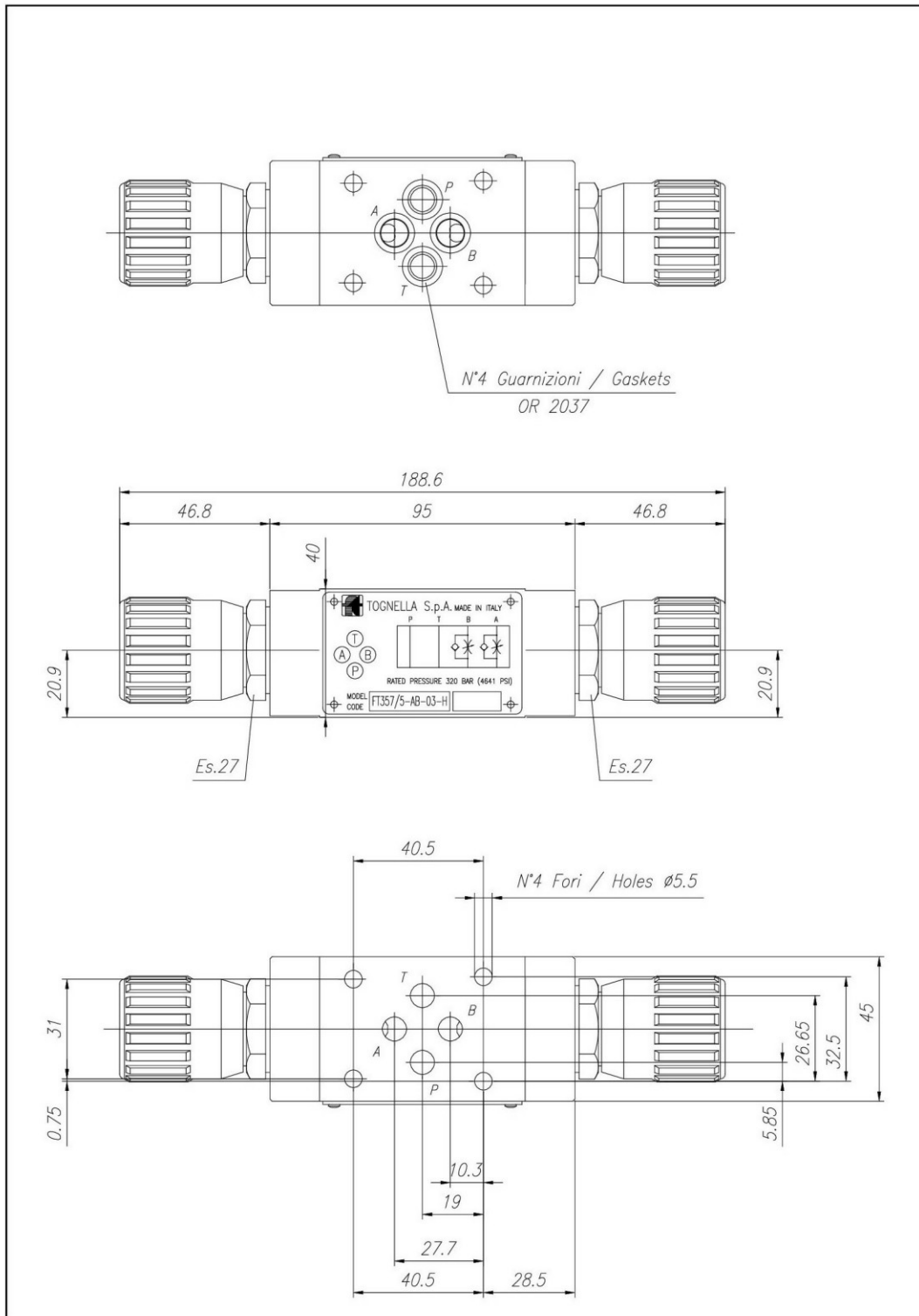
| TIPO / TYPE | PRESSIONE ESERCIZIO BAR / WORKING PRESSURE BAR | TEMPERATURA ESERCIZIO / WORKING TEMPERATURE | CLASSE DI CONTAMINAZIONE FLUIDO / FLUID CONTAMINATION CLASS |
|-------------|--|---|---|
| A-H | 320 | -20°C/+80°C | ISO 4406 19/17/14 |
| AB-H | 320 | -20°C/+80°C | ISO 4406 19/17/14 |
| B-H | 320 | -20°C/+80°C | ISO 4406 19/17/14 |



Dimensional tables and drawings









Flow rate curves

