



## Direct pressure relief valves Cetop 3

### FT 379/3

Pressure relief stackable valves Cetop3, direct control, available with controlled flow on A-B-P or double A+B ports. Max. working pressure 320 Bar

**Cetop 3 valves - NG6**

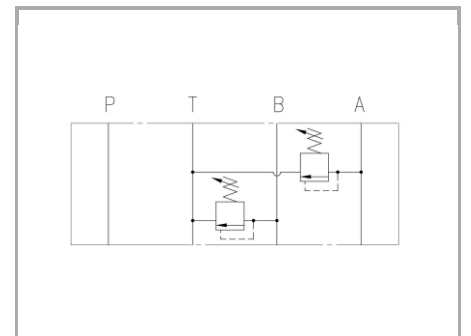
**Pressure relief**

**Direct control**

**Carbon steel**

**Setting regulation field:**

05=10-50 Bar | 10=50-150 Bar | 20=100-250 Bar



## Technical information

### Technical description

CETOP 03 modular plate direct pressure relief valves, ISO 4401, for superimposable mountings. Their function is to limit pressure inside the hydraulic circuit or pressure peaks generated during hydraulic actuators movement changes.

### Materials

<b>CORPO VALVOLA / BODY VALVE</b>	<b>Acciaio/Steel 11 S Mn Pb 37-UNI EN 10087</b>
<b>CORPO CARTUCCIA / CARTRIDGE BODY</b>	<b>Acciaio/Steel 11 S Mn Pb 37-UNI EN 10087</b>
<b>SPILO DI REGOLAZIONE / ADJUSTING NEEDLE</b>	<b>Acciaio legato/Alloy Steel</b>
<b>GUARNIZIONI / GASKETS</b>	<b>Di serie NBR - A richiesta FPM/Standard NBR-on demand FPM</b>
<b>ANELLI ANTIESTRUSIONE / ANTIEXTRUSION RINGS</b>	<b>PTFE</b>
<b>MANOPOLA TIPO MA / KNOB TYPE MA</b>	<b>Alluminio/Aluminum GD AISi12- UNI EN AB 46100</b>



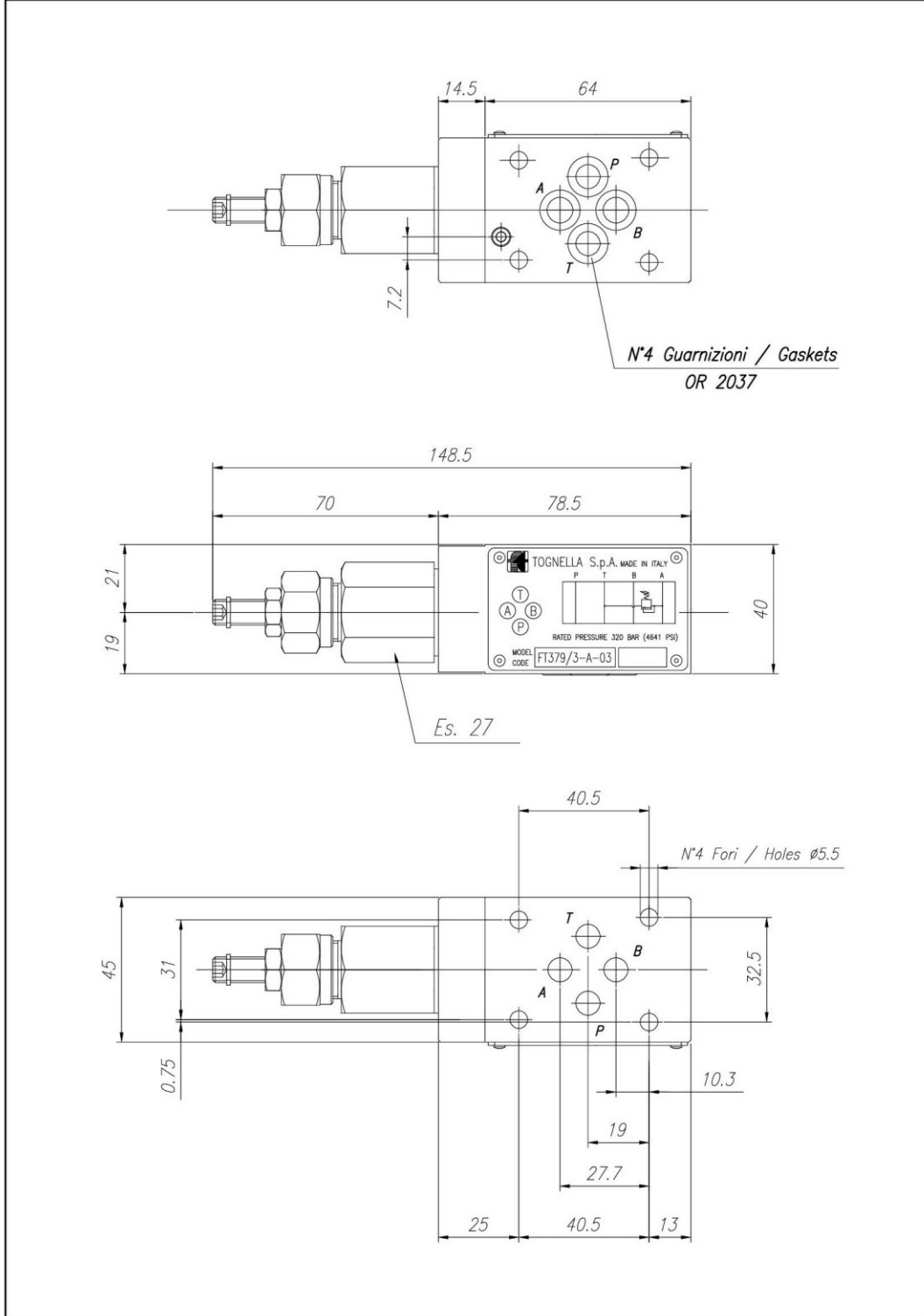
## Technical data

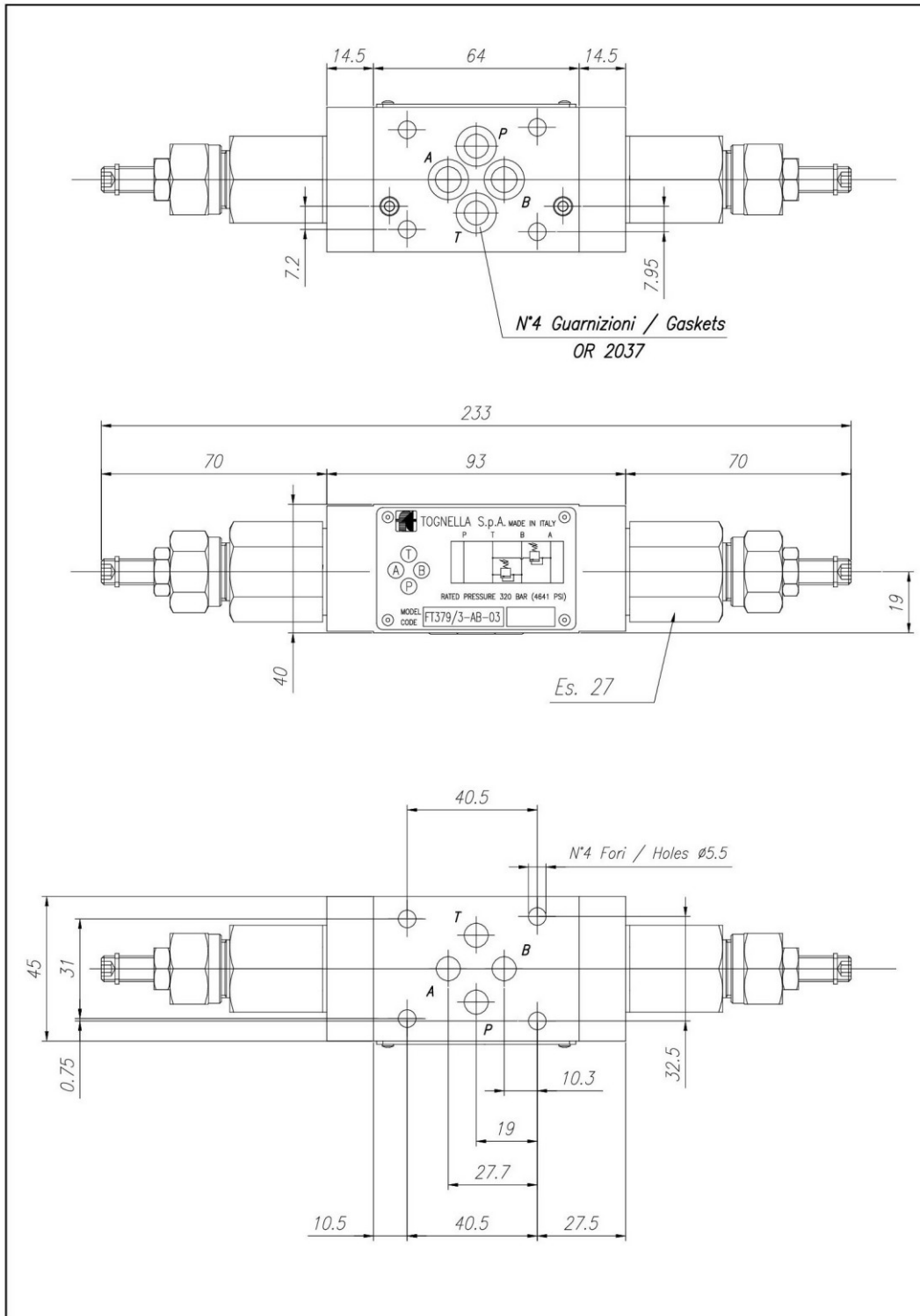
CAMPO REGOLAZIONE TARATURA SETTING REGULATION FIELD	
FT 379/3-03	05 = 10-50 Bar
	10 = 50-150 Bar
	20 = 100-250 Bar

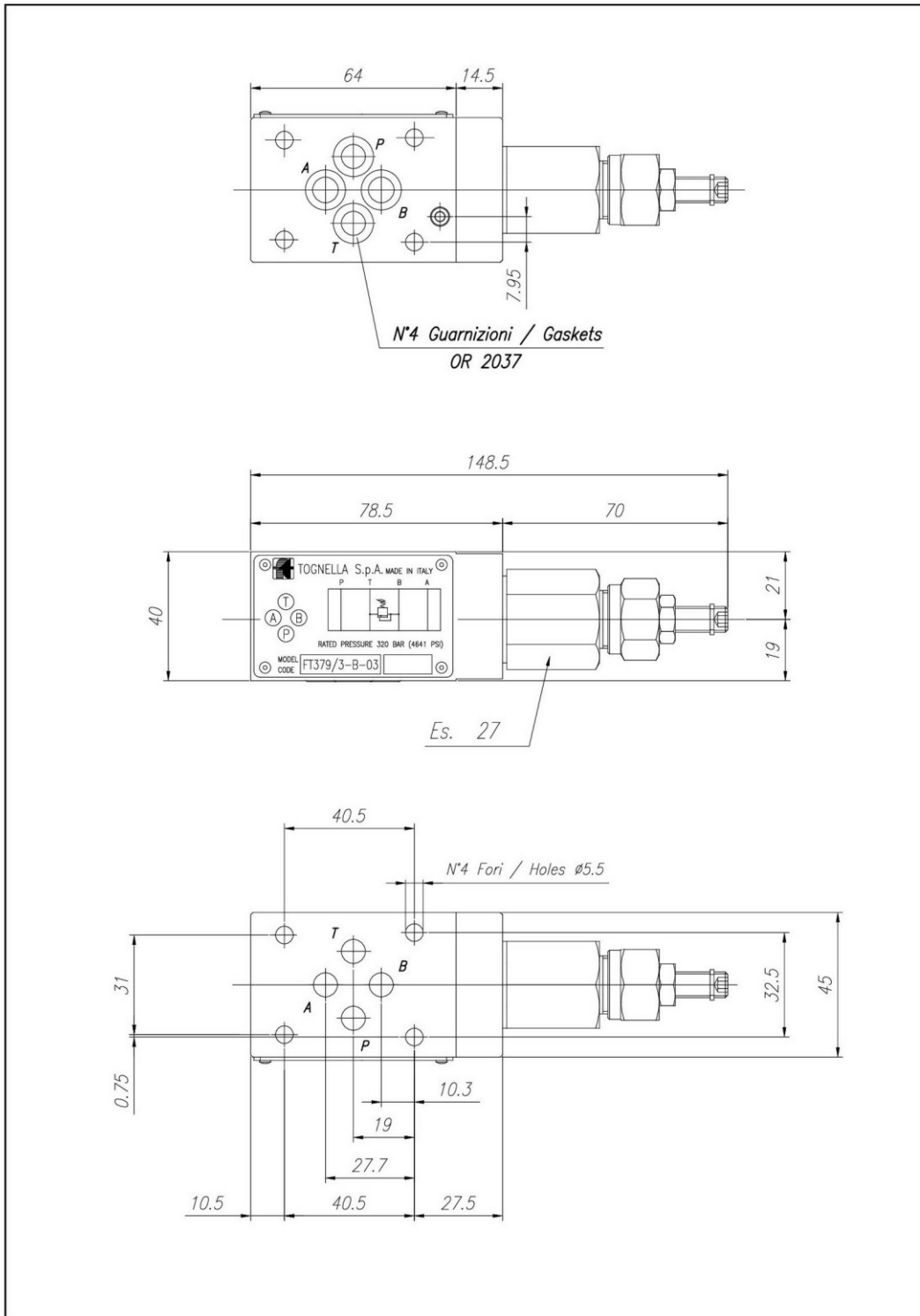
TIPO / TYPE	PRESSIONE ESERCIZIO BAR / WORKING PRESSURE BAR	TEMPERATURA ESERCIZIO / WORKING TEMPERATURE	CLASSE DI CONTAMINAZIONE FLUIDO / FLUID CONTAMINATION CLASS
A	320	-20°C/+80°C	ISO 4406 19/17/14
AB	320	-20°C/+80°C	ISO 4406 19/17/14
B	320	-20°C/+80°C	ISO 4406 19/17/14
P	320	-20°C/+80°C	ISO 4406 19/17/14

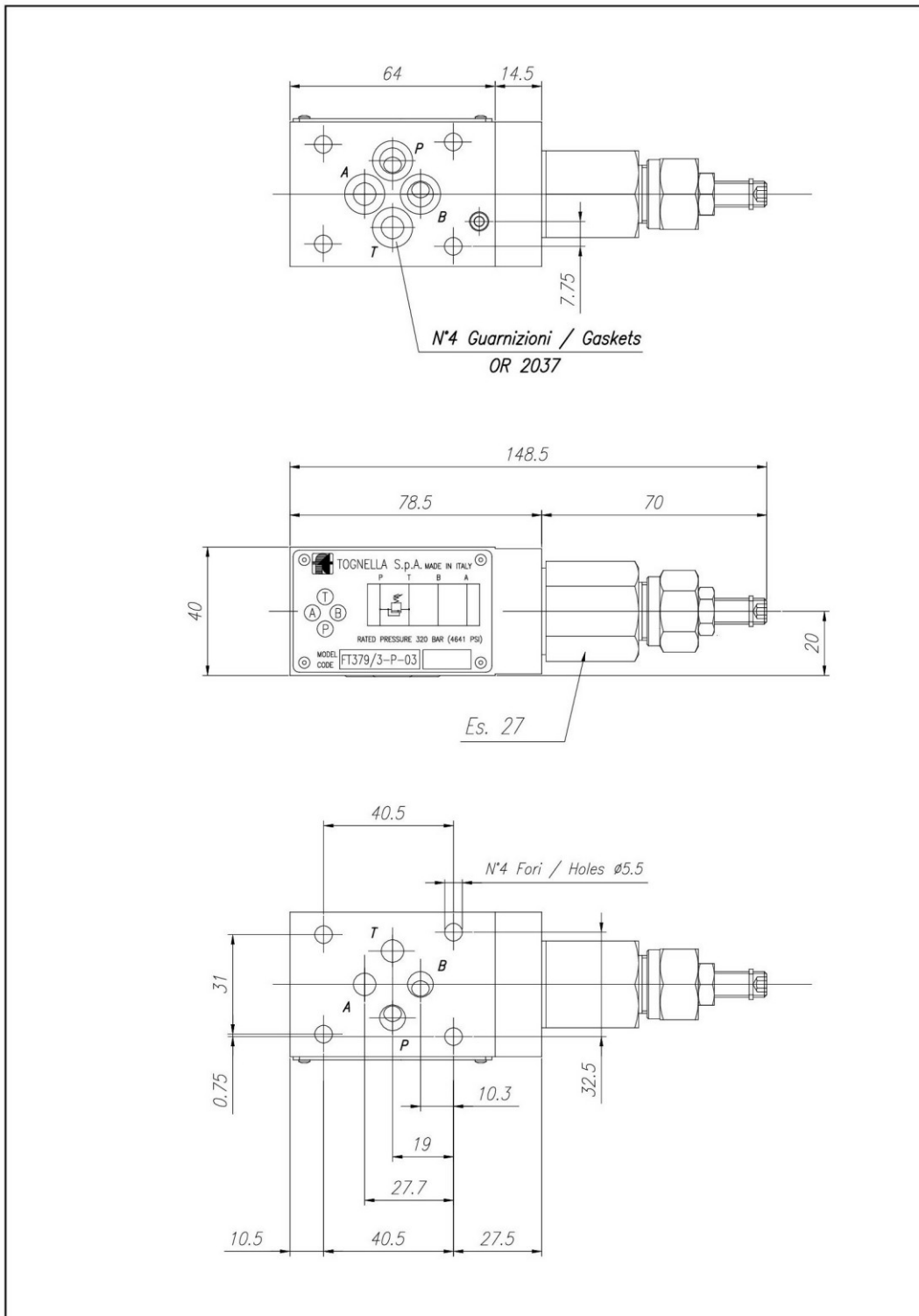


## Dimensional tables and drawings



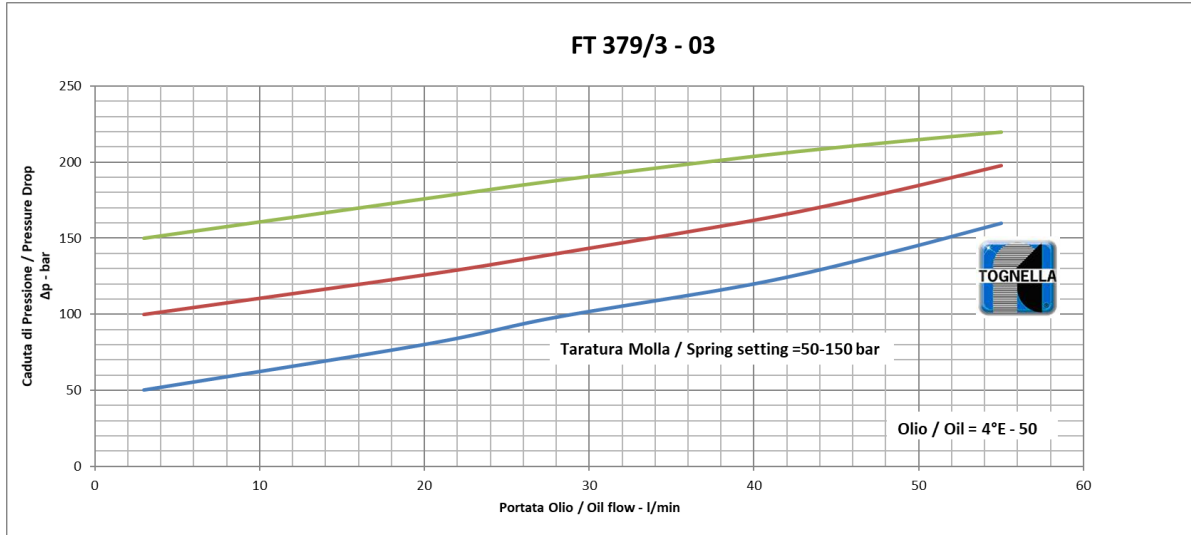








## Flow rate curves



Q

