



Pilot pressure reducing valves Cetop 5

FT 376/4

Pressure reducing stackable valves Cetop5, pilot control, available with controlled flow on A-B-P ports. Max. working pressure 320 Bar

Cetop 5 valves - NG10

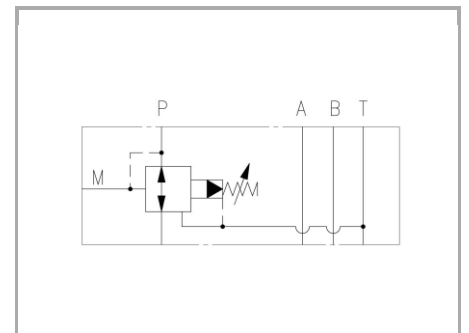
Pressure reducing

Pilot control

Carbon steel

Setting regulation field:

05=10-60 Bar | 10=30-160 Bar | 20=70-260 Bar



Technical information

Technical description

These valves are Cetop 05 reducing pressure in plate modulare execution, ISO 44012-05 for superimposable mountings. Their function is to protect the secondary circuit from over pressure as they allow an inverted flow rate from the use to discharge T. Flow rate 60L/min. - regulation rate available (see our catalogue)

Materials

CORPO VALVOLA / BODY VALVE	Acciaio/Steel 11 S Mn Pb 37-UNI EN 10087
CORPO CARTUCCIA / CARTRIDGE BODY	Acciaio/Steel 11 S Mn Pb 37-UNI EN 10087
SPILO DI REGOLAZIONE / ADJUSTING NEEDLE	Acciaio legato/Alloy Steel
GUARNIZIONI / GASKETS	Di serie NBR - A richiesta FPM/Standard NBR-on demand FPM
ANELLI ANTIESTRUSIONE / ANTIEXTRUSION RINGS	PTFE
MANOPOLA TIPO MA / KNOB TYPE MA	Alluminio/Aluminum GD AISi12- UNI EN AB 46100



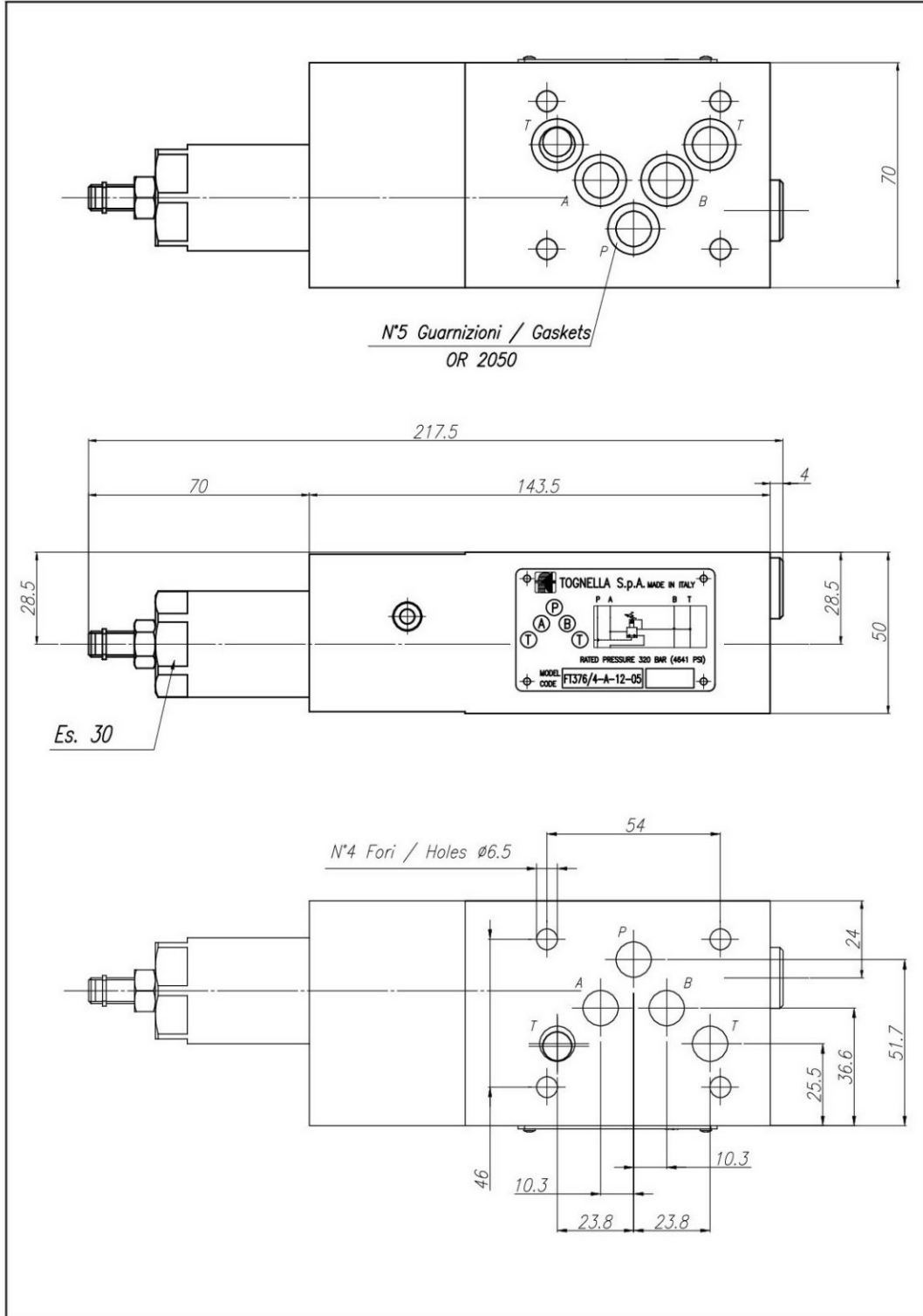
Technical data

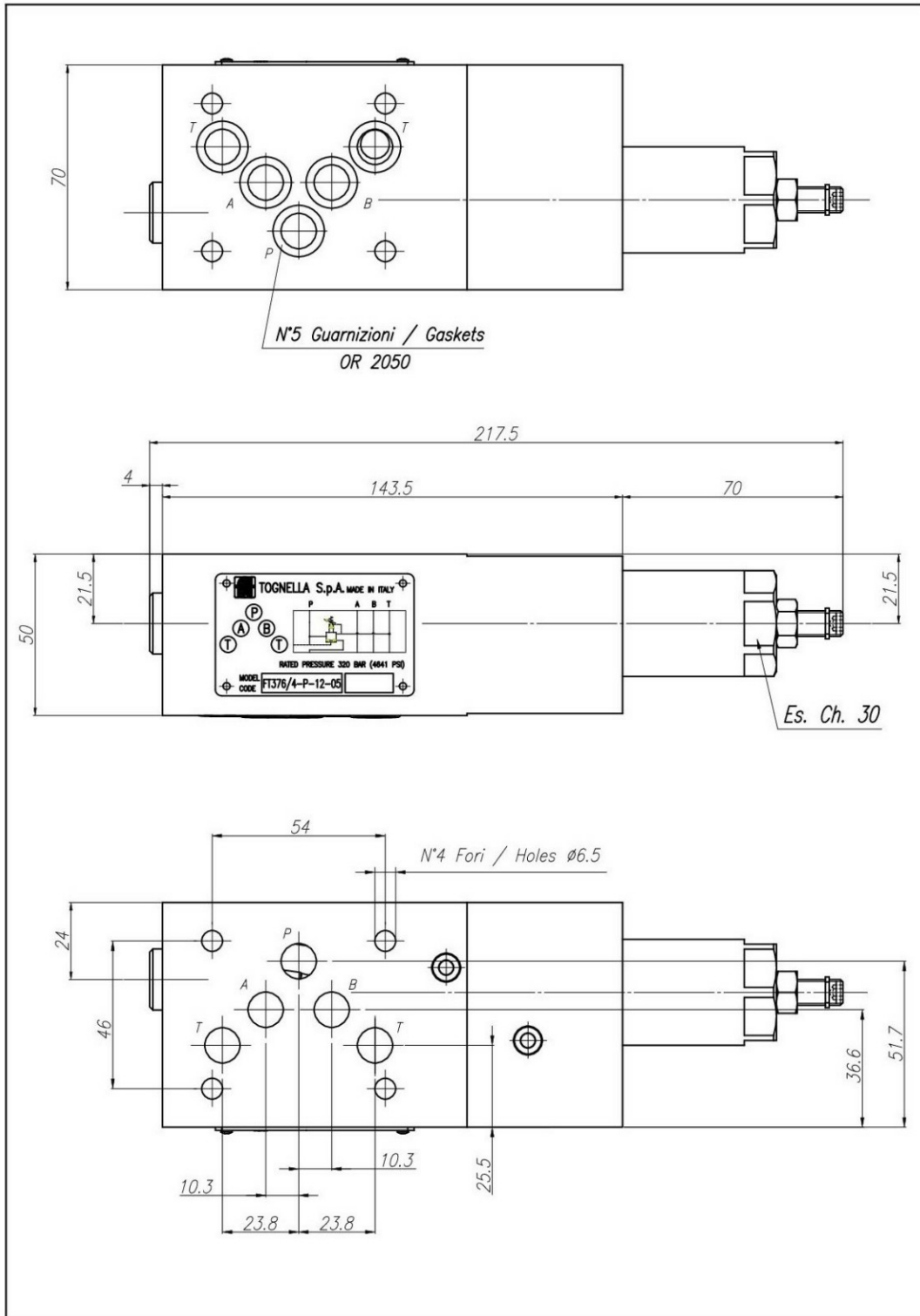
CAMPO REGOLAZIONE TARATURA SETTING REGULATION FIELD	
FT 376/4-05	05 = 10-60 Bar
	10 = 30-160 Bar
	20 = 70-260 Bar

TIPO / TYPE	PRESSIONE ESERCIZIO BAR / WORKING PRESSURE BAR	TEMPERATURA ESERCIZIO / WORKING TEMPERATURE	CLASSE DI CONTAMINAZIONE FLUIDO / FLUID CONTAMINATION CLASS
A	320	-20°C/+80°C	ISO 4406 19/17/14
B	320	-20°C/+80°C	ISO 4406 19/17/14
AB	320	-20°C/+80°C	ISO 4406 19/17/14



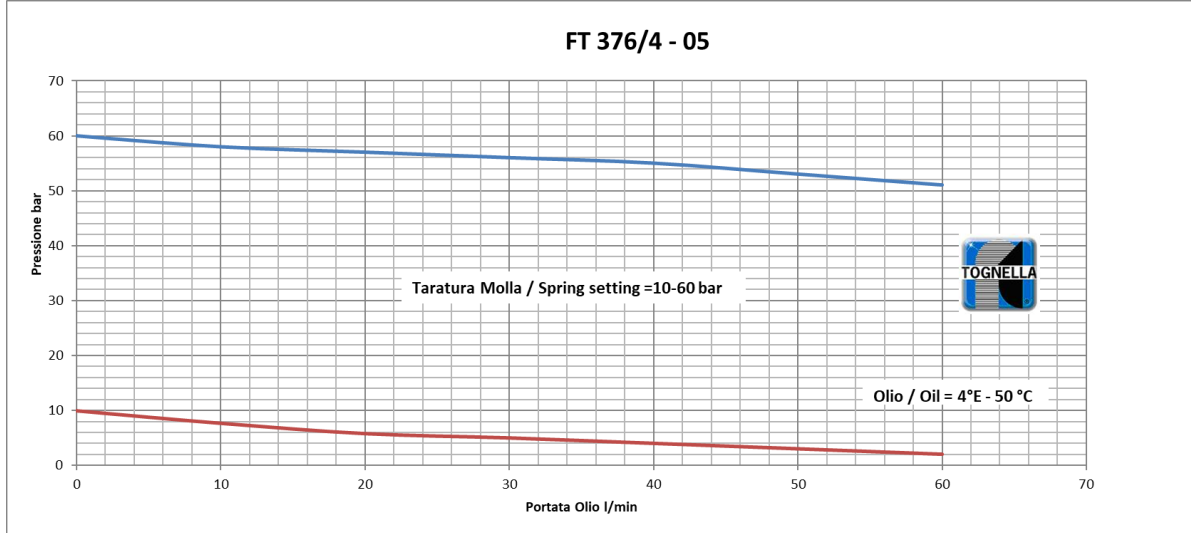
Dimensional tables and drawings







Flow rate curves



a

