



## Single-acting flow control valves Cetop 5

### FT 358/5

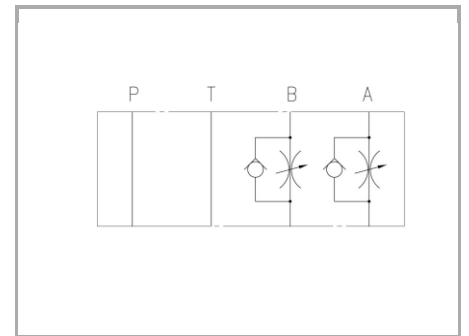
Single-acting flow control stackable valves Cetop5 available with controlled flow on A-B or double A+B ports, max. working pressure 320 bar, adjustable oil flow rate from 3 to 45 Lt./min.

**Cetop 5 valves - NG10**

**Flow control**

**Single-acting control (Meter-in)**

**Carbon steel**



## Technical information

### Technical description

Flow rate control valve, not compensated, for modular mounting with subplate surface according to ISO 4401-05. It permits a fine fluid regulation even with minimum flow rate, allowing free flow in the opposite direction. Single regulation available on A or B or double A+B. Version with adjusting screw, equipped with locking nut, for flow rate regulation. Flow rate 65L./min.

### Materials

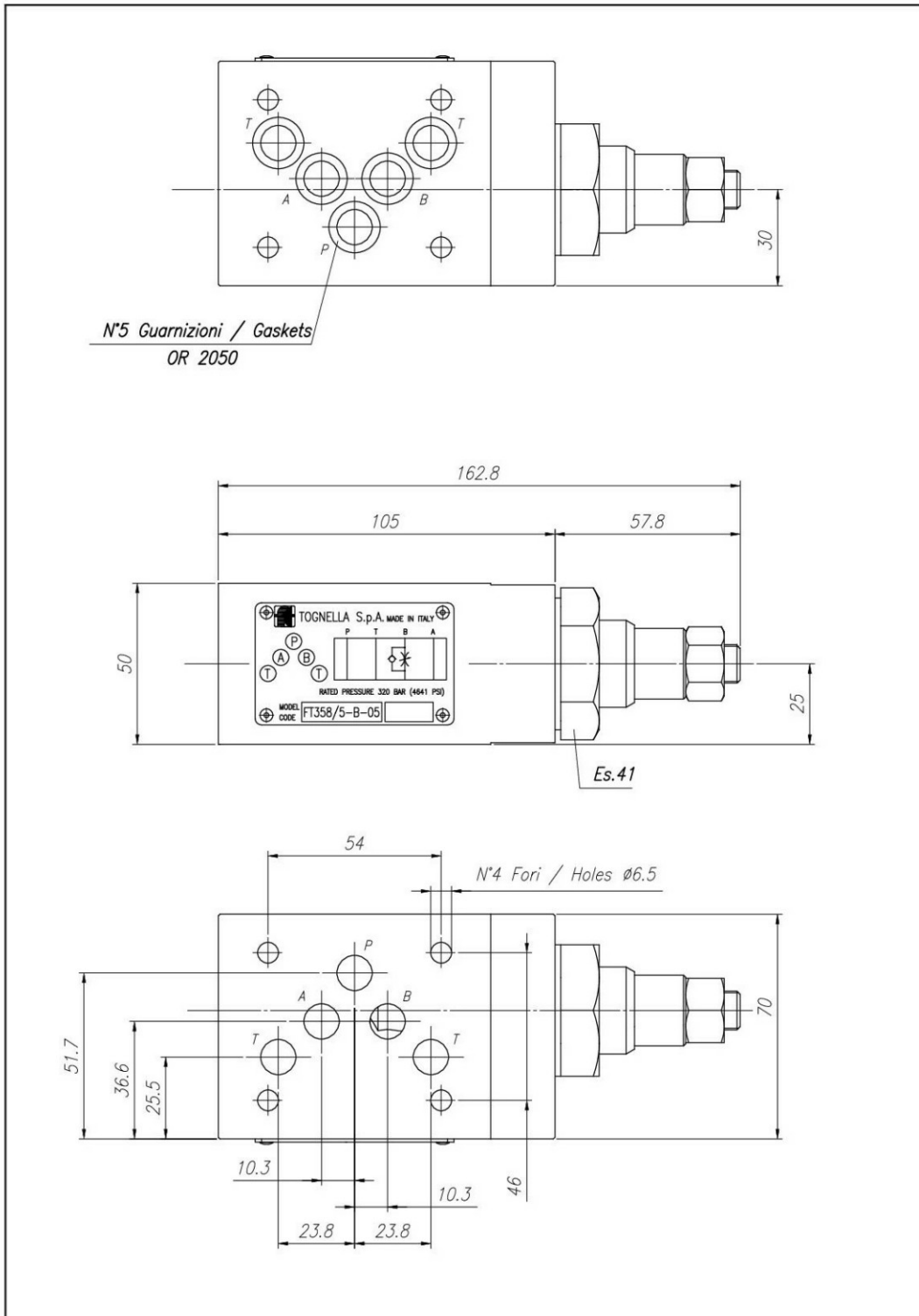
<b>CORPO VALVOLA / BODY VALVE</b>	<b>Acciaio/Steel 11 S Mn Pb 37-UNI EN 10087</b>
<b>CORPO CARTUCCIA / CARTRIDGE BODY</b>	<b>Acciaio/Steel 11 S Mn Pb 37-UNI EN 10087</b>
<b>SPILO DI REGOLAZIONE / ADJUSTING NEEDLE</b>	<b>Acciaio legato/Alloy Steel</b>
<b>GUARNIZIONI / GASKETS</b>	<b>Di serie NBR - A richiesta FPM/Standard NBR-on demand FPM</b>
<b>ANELLI ANTIESTRUSIONE / ANTIEXTRUSION RINGS</b>	<b>PTFE</b>
<b>MANOPOLA TIPO MA / KNOB TYPE MA</b>	<b>Alluminio/Aluminum GD AISi12- UNI EN AB 46100</b>

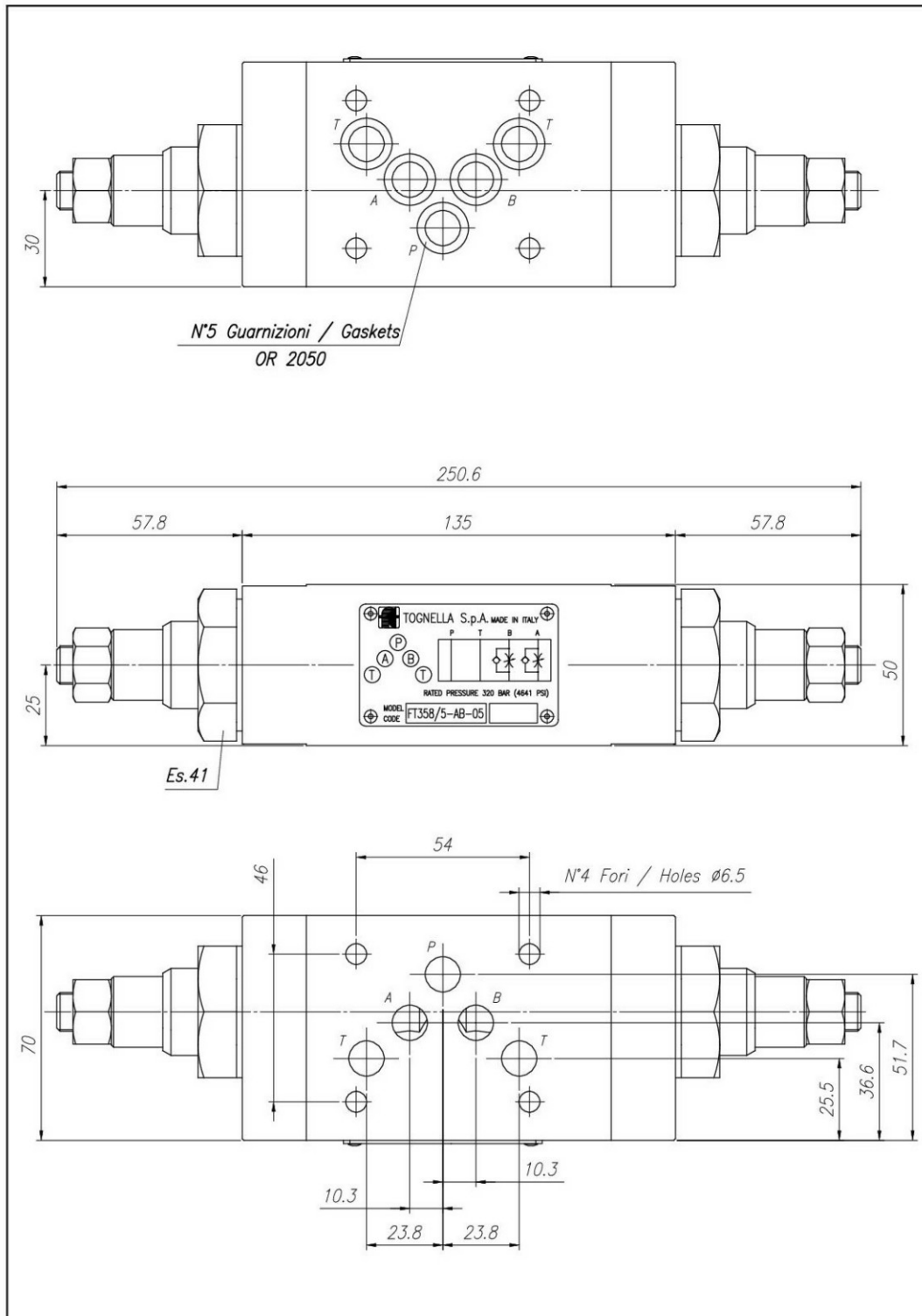


## Technical data

TIPO / TYPE	PRESSIONE ESERCIZIO BAR / WORKING PRESSURE BAR	TEMPERATURA ESERCIZIO / WORKING TEMPERATURE	CLASSE DI CONTAMINAZIONE FLUIDO / FLUID CONTAMINATION CLASS
A	320	-20°C/+80°C	ISO 4406 19/17/14
AB	320	-20°C/+80°C	ISO 4406 19/17/14
B	320	-20°C/+80°C	ISO 4406 19/17/14









## Flow rate curves

