



## Pilot check valves Cetop 5

### FT 357/8

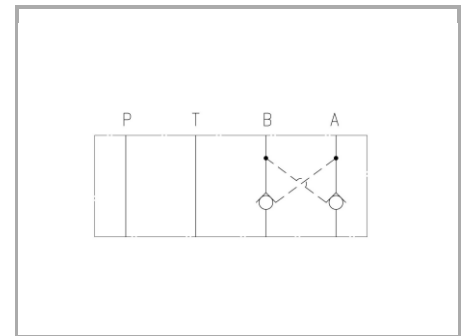
Single-acting stackable valves Cetop5, pilot control, available with controlled flow on double A+B ports. Max. working pressure 320 Bar, oil flow rate up to 70 Lt./min.

**Cetop 5 valves - NG10**

**Check valves**

**Pilot control**

**Carbon steel**



## Technical information

### Technical description

Cetop 05 single-pilot check valve with plate modular execution according to ISO 4401-05 for superimposable mountings. They have the function of a perfect sealing with the fluid passage in one direction and they permit the free flow in the opposite one when piloted. Standard ratio rate 3:1. Available double version on "A" + "B" ( FT 357/8...) or single ( FT 357/9...). Flow rate 70L./min.

### Materials

<b>CORPO VALVOLA / BODY VALVE</b>	<b>Acciaio/Steel 11 S Mn Pb 37-UNI EN 10087</b>
<b>CORPO CARTUCCIA / CARTRIDGE BODY</b>	<b>Acciaio/Steel 11 S Mn Pb 37-UNI EN 10087</b>
<b>SPILO DI REGOLAZIONE / ADJUSTING NEEDLE</b>	<b>Acciaio legato/Alloy Steel</b>
<b>GUARNIZIONI / GASKETS</b>	<b>Di serie NBR - A richiesta FPM/Standard NBR-on demand FPM</b>
<b>ANELLI ANTIESTRUSIONE / ANTIEXTRUSION RINGS</b>	<b>PTFE</b>
<b>MANOPOLA TIPO MA / KNOB TYPE MA</b>	<b>Alluminio/Aluminum GD AISi12- UNI EN AB 46100</b>

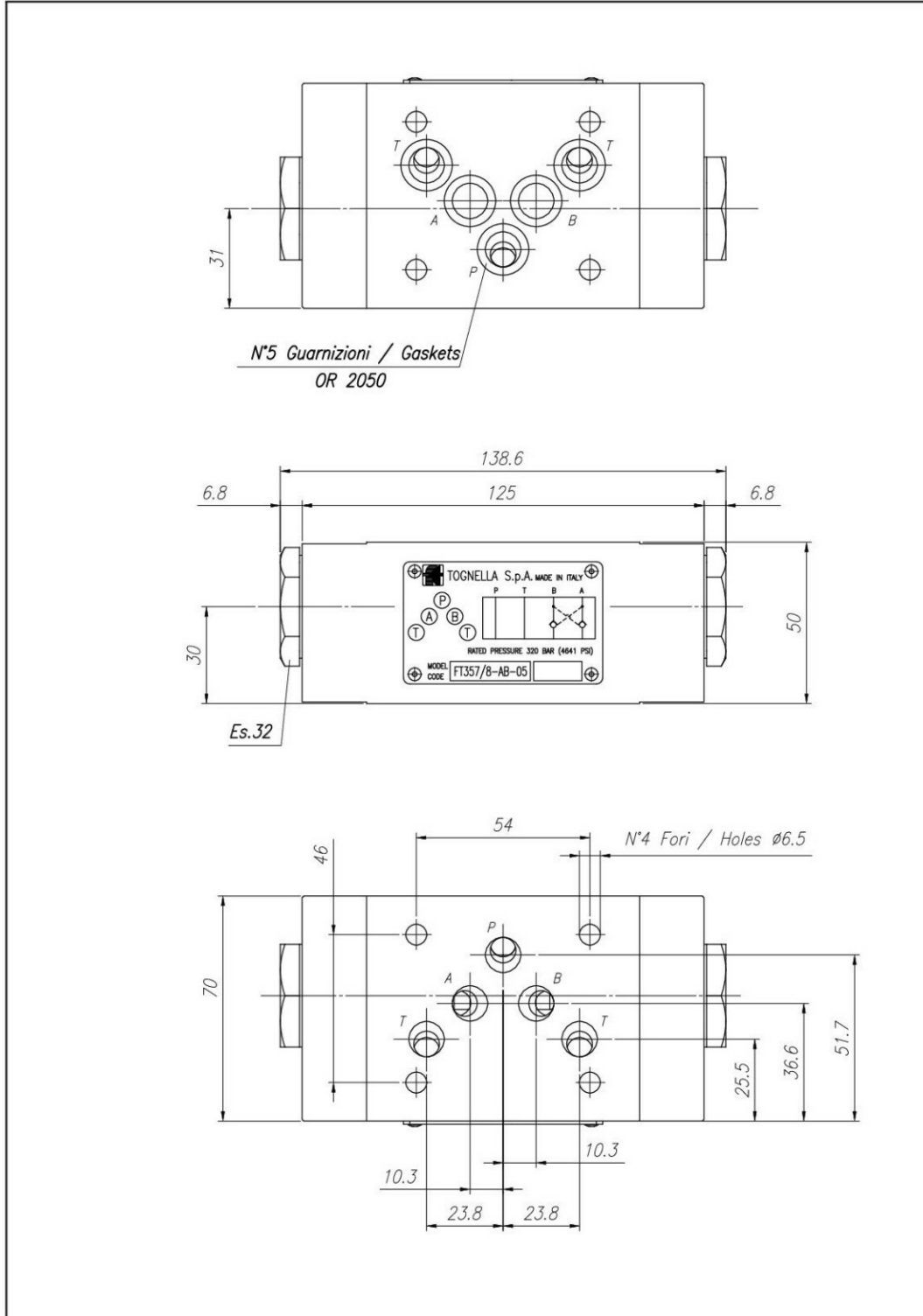


## Technical data

TIPO / TYPE	PRESSIONE ESERCIZIO BAR / WORKING PRESSURE BAR	TEMPERATURA ESERCIZIO / WORKING TEMPERATURE	CLASSE DI CONTAMINAZIONE FLUIDO / FLUID CONTAMINATION CLASS
A	320	-20°C/+80°C	ISO 4406 19/17/14
AB	320	-20°C/+80°C	ISO 4406 19/17/14
B	320	-20°C/+80°C	ISO 4406 19/17/14



## Dimensional tables and drawings





## Flow rate curves

